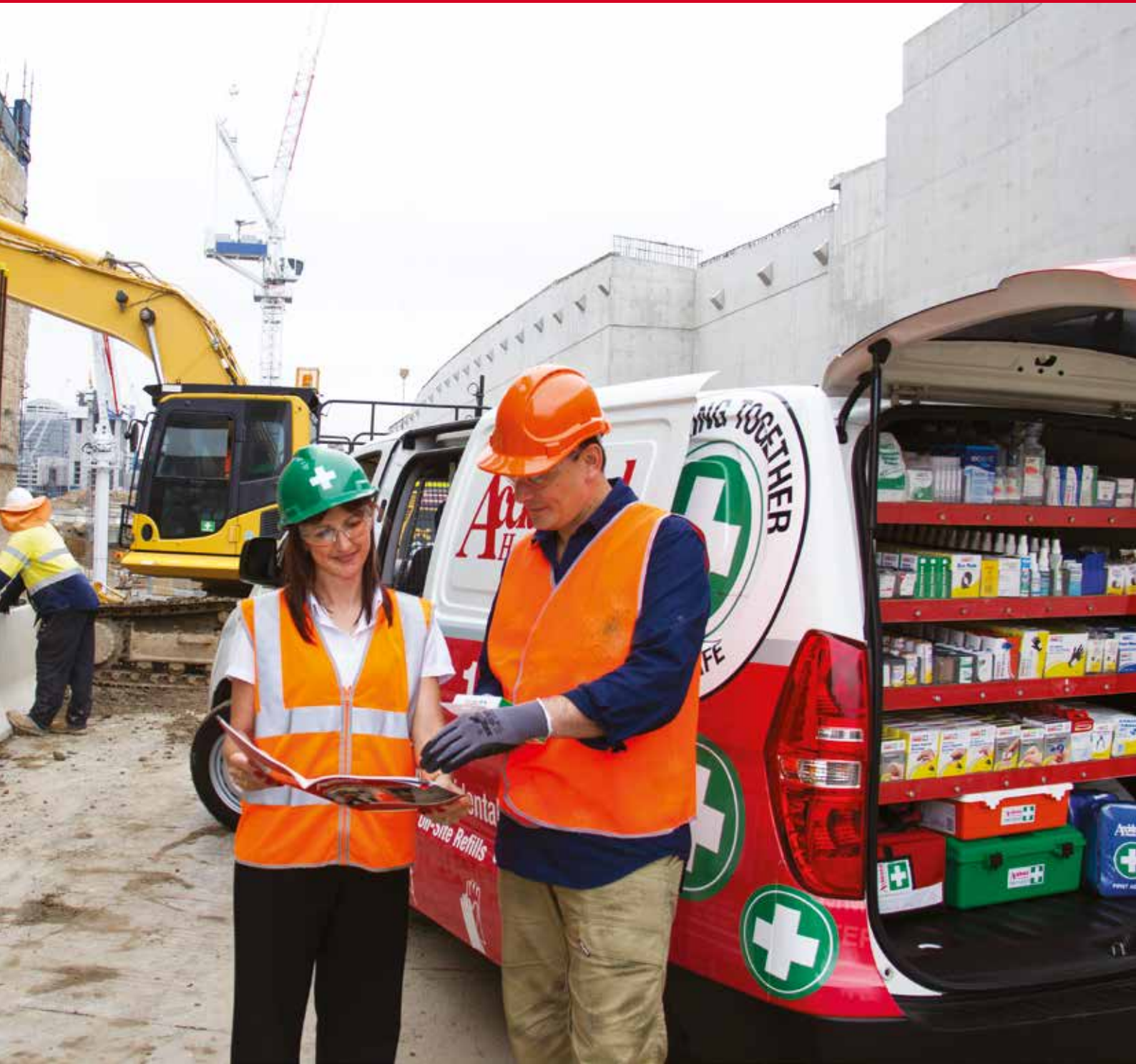


Accidental Health & Safety®

FIRST AID, HEALTH & SAFETY SOLUTIONS



LOCALLY OWNED, NATIONALLY REPRESENTED

Since 1986, Accidental has been working together with companies and organisations nationally to comply to Standards and Workplace Health and Safety legislation to ensure the Australian workplace is equipped with first aid and safety solutions to minimise hazards and accidents.

Our local on-site service team is there to work together with you in maintaining a safe workplace through sourcing products suitable to your industry and to ensure that your workplace is always ready for an emergency. We focus on delivering our expertise to your workplace to ensure that you receive health and safety solutions that will ease your load and contribute to a safer work environment.



Our specialty is ensuring your compliance obligations are fulfilled and making first aid in your workplace simple and easy.

WE COME TO YOU

ONSITE WORKPLACE FIRST AID REPLENISHMENT

We recognise you're busy running your business, which is why we come to you and take the hassle out of maintaining and restocking your first aid kits.

This means you are always prepared in the event of an emergency and you are meeting your legal requirements to have well equipped first aid facilities available to your workers at all times.

Accidental can schedule regular first aid replenishment site visits, as often as every month, quarterly or half yearly. On these visits, we will:

- Check first aid kits are adequately identified to assist in easily locating first aid equipment and facilities
- Dust, tidy and organise first aid kits
- Ensure that items are in good working order, have not deteriorated, are within their expiry dates and that sterile products are sealed and have not been tampered with
- Ensure the kit contains a complete set of the required items specific to your workplace's needs, and replenish required items with our range of colour coded workplace first aid products



WE OFFER YOU

- ✓ Product Quality, Assurance And Reliability
- ✓ Complete Site Replenishment Service
- ✓ Compliance Expertise
- ✓ Customisation On First Aid Kits
- ✓ First Aid And Safety Training
- ✓ Drug Testing Training
- ✓ Tailored Safety Solutions To Your Workplace
- ✓ Online Ordering And Booking
- ✓ Wide Range Of Workplace Health And Safety Products

WARRANTY

Brady products are sold with the understanding that the buyers will test them in actual use and determine for themselves their adaptability to their intended uses. Brady warrants to the buyers that its products are free from defects in material and workmanship, but limits its obligation under this warranty to replacement of the product shown to Brady's satisfaction to have been defective at the time Brady sold it. This warranty does not extend to any persons obtaining the product from the buyers. This warranty is in lieu of any other warranty, express or implied, including, but not limited to, any implied warranty of merchantability or fitness for a particular purpose, and of any other obligations or liability on Brady's part. Under no circumstances will Brady be liable for any loss, damage, expense, or consequential damages of any kind arising in connection with the use, or inability to use, Brady's products.

Brady Australia Pty Ltd reserves the right to make adjustments to any advertised product due to legislative changes, manufacturer's specification changes and product availability.

COMPLIANCE		04
<ul style="list-style-type: none"> First Aid Compliance Overview Responsibilities & Requirements Workplace Assessment 	<ul style="list-style-type: none"> First Aid Products Onsite First Aid Room Needs First Aid Training – Book Online 	P

FIRST AID KITS		08
<ul style="list-style-type: none"> National First Aid Kits Code Of Practice First Aid Kits First Aid Modules 	<ul style="list-style-type: none"> Industry First Aid Kits Personal & Vehicle Kits Injury First Aid Kits 	P

FIRST AID SUPPLIES		18
<ul style="list-style-type: none"> Dressings & Bandages Antiseptics Pharmacy 	<ul style="list-style-type: none"> Eye Care Instruments Infection Control 	P

FIRST AID KIT CASES		31
<ul style="list-style-type: none"> Metal Cases Polypropylene Cases 	<ul style="list-style-type: none"> Wall Mounted Cabinets Portable Cases 	P

FIRST AID EQUIPMENT		32
<ul style="list-style-type: none"> Thermometers Sphygmomanometers 	<ul style="list-style-type: none"> Dishes & Measuring Ware Waste & Sharps Disposal 	P

FIRST AID ROOM		34
<ul style="list-style-type: none"> Requirements Equipment 	<ul style="list-style-type: none"> Furniture Bedding & Towels 	P

RESCUE		37
<ul style="list-style-type: none"> Defibrillators Resuscitation Products 	<ul style="list-style-type: none"> Emergency Equipment Stretchers 	P

FIRE SAFETY		41
<ul style="list-style-type: none"> Extinguishers Blankets 	<ul style="list-style-type: none"> Fire Safety Equipment Fire Signs 	P

SUN PROTECTION		44
<ul style="list-style-type: none"> 30+ Sunscreen 50+ Sunscreen 	<ul style="list-style-type: none"> Sunscreen With Insect Repellent Zinc Cream 	P

SIGNS		45
<ul style="list-style-type: none"> Workplace Safety Posters First Aid Signs 	<ul style="list-style-type: none"> First Aid Equipment Signs Custom Signs 	P

INDEX		49
<ul style="list-style-type: none"> Use Our Comprehensive Index To Help You Find The Products You Need 		P

ORDER FORM		50
<ul style="list-style-type: none"> Assists In Quick And Easy Ordering 		P

SCHEDULED MAINTENANCE

Accidental can schedule regular visits to your site to maintain and restock your first aid kit, so you are always prepared in the event of an emergency and are meeting your requirements for regular maintenance and review as outlined in the Code of Practice. Visits can be as often as every month, quarterly or half yearly.

CATALOGUE ICONS

At Accidental, we make it easy for you to select the right product, look out for these icons in the catalogue.

High Risk Workplace means a workplace where workers are exposed to hazards that could result in serious injury or illness and would require first aid.

For Example:

- Trucks & Mobile Contractor Vehicles
- Factories
- Mining
- Outdoor Work
- Electrical Work
- Extreme Temperatures
- Remote Work
- Construction
- Security
- Food Preparation

Low Risk Workplace means a workplace where workers are not exposed to hazards that could result in serious injury or illness.

For Example:

- Office
- Low Risk Work Vehicles
- Shops
- Libraries

Potential work-related injuries and illnesses requiring first aid would be minor in nature.

To help you comply and create a safe work environment look out for this icon for compliance notes and product recommendations from the First Aid Code of Practice, July 2012.

Need first aid that has been developed specifically for the food preparation and manufacturing industry, simply locate this icon.

Look out for this symbol for additional first aid treatment and product information.

Accidental's First Aid kits are designed with our users in mind, making applying First Aid easy, simple and effective!

WORKPLACE FIRST AID COMPLIANCE

FIRST AID IN THE WORKPLACE

CODE OF PRACTICE – RELEASED JULY 2012

This Code of Practice on first aid in the workplace is an approved Code of Practice under section 274 of the Work Health and Safety Act (the WHS Act).

Codes of Practice are admissible in court proceedings under the WHS Act and Regulations. Courts may regard a Code of Practice as evidence of what is known about a hazard, risk or control and may rely on the code in determining what is reasonably practicable in the circumstances to which the code relates.

An inspector may refer to an approved Code of Practice when issuing an improvement or prohibition notice.

Source: *First Aid In The Workplace Code Of Practice – Released July 2012*



For First Aid in the Workplace Code of Practice and a listing of your local work health and safety administrators go to www.accidental.com.au/experts

WHO IS RESPONSIBLE FOR PROVIDING FIRST AID IN THE WORKPLACE?

1. PRIMARY DUTY

Person conducting a business or undertaking (PCBU).

WHS Regulations require PCBU to provide adequate first aid facilities in the workplace.

2. EXERCISE DUE DILIGENCE

Officers, such as company directors, have a duty to exercise due diligence to ensure that the business or undertaking has and uses appropriate resources and processes for first aid in their workplace.

3. DUTY TO TAKE REASONABLE CARE

Workers have a duty to take reasonable care for their own health and safety and must comply with procedures for first aid and for reporting injuries and illnesses.

WHAT IS REQUIRED IN PROVIDING FIRST AID?

First aid requirements will vary from one workplace to the next, depending on the nature of the work, the type of hazards, the workplace size and location, as well as the number of people at the workplace.

STEP 1 – IDENTIFY YOUR WORKPLACE ENVIRONMENT, HIGH RISK OR LOW RISK



Low Risk Workplace means a workplace where workers are not exposed to hazards that could result in serious injury or illness such as offices, shops or libraries. Potential work-related injuries and illnesses requiring first aid would be minor in nature.



High Risk Workplace means a workplace where workers are exposed to hazards that could result in serious injury or illness and would require first aid. For example, factories, construction sites, mobile plant, motor vehicle workshops and forestry operations.



Certain work environments have greater risks of injury and illness due to the nature of work being carried out and the nature of the hazards at the workplace (see examples right).

LOW RISK WORKPLACE

MINOR INJURIES OR ILLNESS

- Offices
- Shops
- Low Risk Work Vehicles
- Libraries

HIGH RISK WORKPLACE

SERIOUS INJURIES OR ILLNESS

- Factories
- Mining
- Outdoor Work
- Electrical Work
- Workshops
- Extreme Temperatures
- Trucks & Mobile Contractor Vehicles
- Remote Work
- Mining
- Construction
- Security
- Food Prep

STEP 2 – IDENTIFY THE HAZARDS AND ASSESS THE RISK OF WORKPLACE INJURY AND ILLNESS

Certain work environments have greater risks of injury and illness due to the nature of work being carried out and the nature of the hazards at the workplace. For example, factories, motor vehicle workshops and forestry operations have a greater risk of injury that would require immediate medical treatment than offices or libraries. These workplaces will therefore require different first aid arrangements.

WHEN ASSESSING YOUR FIRST AID REQUIREMENTS ALWAYS CONSIDER:

☐ SIZE AND LOCATION OF THE WORKPLACE:

- The distance between different work areas
- The response times for emergency services
- Separate work areas
- Number of buildings on a site
- Multiple floors - at least one kit should be located on every second floor
- Close to areas where there is a higher risk of injury or illness
- Motor vehicles and remote or isolated areas

☐ REGULAR CONSULTATION WITH WORKERS:

A person conducting a business or undertaking must consult, co-operate and co-ordinate activities with all other persons who have a work health or safety duty in relation to the same matter, so far as is reasonably practicable.

You must consult your workers when making decisions about what facilities are needed, including those required for administering first aid.

CONSULTATION SHOULD INCLUDE:

- The quantity, location and contents of first aid kits and other equipment
- The type of first aid facilities that may be needed
- First aid procedures
- The number of trained first aiders

Source: *First Aid In The Workplace Code Of Practice – Released July 2012. The onus for assessing each workplace rests with all Australian individual workplaces and sites managing their own risk profile. Accidental Health & Safety makes no representation as to verifying the compliance rating of each workplace / site in respect of the Safe Work Australia First Aid Code of Practice.*

WORKPLACE HAZARDS CHECK LIST

EXAMPLES OF INJURIES ASSOCIATED WITH COMMON WORKPLACE HAZARDS THAT MAY REQUIRE FIRST AID			MODULE	PAGE REF.
Manual Tasks	Overexertion can cause muscular strain.	<input type="checkbox"/>	101682 Sprains & Strains	11
Working At Heights	Slips, trips and falls can cause fractures, bruises, lacerations, dislocations and concussion.	<input type="checkbox"/>	101490B Trauma Module	11
Electricity	Potential ignition source may cause injuries from fire. Exposure to live electrical wires can cause shock, burns and cardiac arrest.	<input type="checkbox"/>	101683 Burns Module	11
Machinery And Equipment	Hit by moving vehicles or caught by moving parts of machinery can cause fractures, amputation, bruises, lacerations and dislocations.	<input type="checkbox"/>	101490B Trauma Module 101487 Wound Care Module	11
Hazardous Chemicals	Toxic or corrosive chemicals may be inhaled, contact skin or eyes causing poisoning, chemical burns and irritation. Flammable chemicals could result in injuries from fire or explosions.	<input type="checkbox"/>	101683 Burns Module 101685 Eye Module	11
Extreme Temperatures	Hot surfaces and materials can cause burns. Exposure to heat can cause heat stress and fatigue. Exposure to extreme cold can cause hypothermia and frost bite.	<input type="checkbox"/>	101683 Burns Module 101489B Outdoor Module	11
Radiation	Welding arc flashes, ionizing radiation and lasers can cause burns.	<input type="checkbox"/>	101683 Burns Module 101685 Eye Module	11
Violence	Behaviours including intimidation and physical assault can cause nausea, shock and physical injuries.	<input type="checkbox"/>	101487 Wound Care Module 101490B Trauma Module	11
Animals And Insects	Animals and insects can bite, sting, kick, and scratch causing injury or illness.	<input type="checkbox"/>	101489B Outdoor Module	11
Remote Locations	For workers in remote areas or away from first aid facilities.	<input type="checkbox"/>	101684 Remote Module	11
Food Preparation	Cuts and lacerations in areas requiring detectable first aid products to meet Food Standards recommendations.	<input type="checkbox"/>	101488B Food Prep Module	11
Outdoor Work	If work is performed outside and there is a risk of insect or plant stings or snake bites.	<input type="checkbox"/>	101489B Outdoor Module	11

ALWAYS CONSIDER

The size of your workforce and workplace: to determine the quantity of first aid kits.

The location of your workplace: relevant to local medical centres.

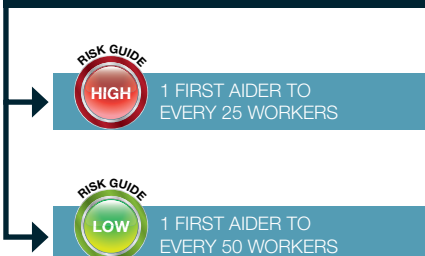
Workplace incident and injury data: including all incidents, even near misses.

Regular consultation: between workers and their Work Health and Safety Representative.

STEP 3 – PROVIDE THE APPROPRIATE FIRST AID EQUIPMENT, FACILITIES AND TRAINING

First aid equipment, facilities and first aiders must be accessible to workers at all times, including those working night shifts or overtime.

TRAINED FIRST AIDERS



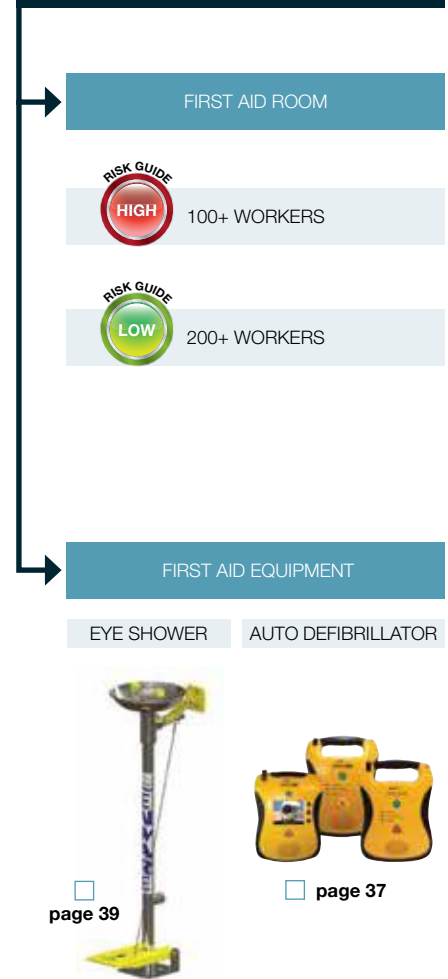
Consult your on-site Accidental Health & Safety Representative to help you complete this checklist.



FIRST AID KITS & MODULES



FIRST AID FACILITIES & EQUIPMENT



WORKPLACE FIRST AID COMPLIANCE

FIRST AID RESPONSIBILITIES AND REQUIREMENTS

All workers must be able to access a first aid kit. This will require at least one first aid kit to be provided at their workplace.

WORKPLACE FIRST AID KITS SHOULD:

- Be large enough to contain all the necessary items
- Be immediately identifiable with a white cross on green background that is prominently displayed on the outside
- Contain a list of the contents for that kit
- Be made of material that will protect the contents from dust, moisture and contamination
- Should be restocked after each use or, if the kit is not used, at least once every 12 months
- Ensure that items are in good working order, have not deteriorated or are within their expiry dates and that sterile products are sealed and have not been tampered with
- The first aid kit should provide basic equipment for administering first aid as recommended in the Code of Practice, Appendix C. See www.accidental.com.au/experts
- The contents of first aid kits should be based on a risk assessment. Additional items maybe required for specific injuries unique to your workplace

Some types of workplaces may require additional items/ modules to treat specific types of injuries or illnesses for example:

Outdoor Work - If work is performed outside and there is a risk of insect or plant stings or snake bites

Remote Work - Where people work in remote locations, appropriate contents will vary according to the nature of the work

Burn Injuries - If your workers are at risk of receiving burns, additional burn gel, dressings and treatment instructions should be provided



Code of Practice and National Kits

First Aid Kits available in range of cases to suite both wall mount and portable applications, see **pages 8-10**.



First Aid Modules

Add on components to ensure you always have the right products on hand, see **page 11**.



Vehicle Kits

A portable first aid kit should be provided in the vehicles of mobile workers, see **pages 14-15**.

FIRST AID SIGNS

Displaying well-recognised, standardised first aid signs will assist in easily locating first aid equipment and facilities. Further information on the design and use of signs is available in AS 1319 - Safety Signs for the Occupational Environment.



Standard signs supplied on **pages 46-47** comply with AS 1319.

AUTOMATIC DEFIBRILLATORS

Providing an automatic defibrillator can reduce the risk of fatality from cardiac arrest and is a useful addition for workplaces where there is a risk of electrocution or where there are large numbers of members of the public.

Automatic defibrillators are designed to be used by trained or untrained persons. They should be located in an area that is clearly visible, accessible and not exposed to extreme temperatures. They should be clearly signed and maintained according to the manufacturer's specifications.



Automatic defibrillators and accessories, see **page 37**.

OTHER FIRST AID EQUIPMENT

In addition to first aid kits, you should consider whether any other first aid equipment is necessary to treat the injuries or illnesses that could occur as a result of a hazard at your workplace.



Sharps Containment, see **page 33**.



Monitors and Equipment, see **page 32**.



Resuscitation, see **page 38**.



Adjustable Cervical Collar, see **page 37**.



Stretchers, see **pages 39-40**.



Couch, see **page 36**.

EYE WASH

Eye wash and shower equipment may be permanently fixed or portable, depending on the workplace. Eye wash equipment should be provided where there is a risk of hazardous chemicals or infectious substances causing eye injuries.

Immediate access should be provided to shower equipment in workplaces where there is a risk of:

- Exposure to hazardous chemicals resulting in skin absorption or contamination from infectious substances
- Serious burns to a large area of the face or body, including chemical or electrical burns or burns that are deep, in sensitive areas or greater than a 20 cent piece



Irrigation Pack, see **page 24**.



Fixed Eye and Face Shower, see **page 39**.

Portable Eyewash Station, see **page 39**.

RECORD-KEEPING

A record of any first aid treatment given should be kept by the first aider and reported to managers on a regular basis to assist reviewing first aid arrangements. First aid treatment records are subject to requirements under Health Records legislation.



Register of Injuries Book, see **page 30**.

FIRST AID ROOMS

A first aid room is recommended for:

- Low risk workplaces with 200 workers or more
- High risk workplaces with 100 workers or more

For more information please see **pages 34 - 36**.



FIRST AIDERS

A person conducting a business or undertaking must ensure that an adequate number of workers are trained to administer first aid at the workplace.

NUMBER OF TRAINED FIRST AIDERS

The following ratios are recommended:

- Low risk workplaces – one first aider for every 50 workers
- High risk workplaces – one first aider for every 25 workers

ADDITIONAL TRAINING FOR FIRST AIDERS

First aiders should:

- Attend training on a regular basis
- Annually undertake refresher training in CPR
- First aid qualifications should be renewed every three years



Our emergency care and safety trainers are highly skilled professionals with a minimum of 10 years industry experience.



NEED FIRST AID TRAINING?

From small offices to large corporations, we tailor training services to suit your needs.

Book a private or public course online at www.accidental.com.au

Accidental Health & Safety training partner Healthcorp, can offer an extensive range of Accredited First Aid & Safety training Australia wide. Go to www.accidental.com.au/ahs-first-aid-training to book your course.

PROVIDING FIRST AID SAFELY

First aiders should also wear personal protective equipment to prevent contact with blood and body substances, including disposable gloves.

CLEANING SPILLS

Cleaning should commence as soon as possible after an incident involving blood or body substances has occurred.



Blood and Vomit Clean Up, see **page 27**.



Bacterial Wipes, see **page 27**.



Gloves, see **page 28**.

CONTAMINATED ITEMS

All items that are soiled with blood or body substances should be placed in plastic bags and tied securely. Sharps, including scissors and tweezers, that have become contaminated with blood or body substances should be disposed of in sharps containers, which must comply with AS 4031 and AS/NZS 4261.



Sharps Containers, see **page 33**.



Biohazard Bags, see **page 33**.



Syringe Picker, see **page 33**.

NATIONAL WORKPLACE FIRST AID KITS

NATIONAL WORKPLACE FIRST AID KITS AND REFILL PACKS

These kits are designed to assist with a self assessed workplace rating of "High Risk" under the Safe Work Australia First Aid Code of Practice.*



- Meets and exceeds the Code of Practice for First Aid In The Workplace contents for first aid kits nationally
- Colour coded first aid supplies for ease of use
- First aid kit containers large enough to add first aid modules to customise your first aid kit to your individual workplace requirements
- Ideal for high risk environments

Our National Workplace First Aid Kits are suitable for a wide variety of industries. This range makes first aid compliance easier for your workplace, simply choose the kit style that best suits your workplace needs - Metal Wall Mountable, ABS Wall Mountable, Soft Pack Portable or Poly Portable.



Our Industrial First Aid Kits feature colour coded products for easy product identification that allows our users or First Aider's to quickly identify which products to use in an emergency.



101462 W350 x H450 x D150mm



101467 W460 x H730 x D155mm



Customise your first aid kit to suit your workplace by adding tailored modules, see **page11**.



101464 W355 x H355 x D200mm



101469 W500 x H320 x D285mm

CODE	DESCRIPTION
101464	Softbag Portable Large
101469	Softbag Portable XLarge
101462	Metal Wall Mountable Large
101467	Metal Wall Mountable XLarge



For kit content list go to www.accidental.com.au/first-aid-kits.html

Kit contents may vary from photos shown in this catalogue depending on model selected and component availability at time of manufacture.

*" As of 1st Jan 2013 only ACT, NT, TAS and SA have approved the Safe Work Australia First Aid in the Workplace Code of Practice. The onus for assessing each workplace rests with all Australian individual workplaces and sites managing their own risk profile. Accidental Health & Safety makes no representation as to verifying the compliance rating of each workplace / site in respect of the Safe Work Australia First Aid Code of Practice"

NATIONAL WORKPLACE FIRST AID KITS



First aid kits can be any size, shape or type to suit your workplace, but each kit should:

- Be large enough to contain all the necessary items
- Be immediately identifiable with a white cross on green background that is prominently displayed on the outside
- Contain a list of the contents for that kit
- Be made of material that will protect the contents from dust, moisture and contamination

Source: First Aid in the Workplace Code of Practice, July 2012



101674 W460 x H175 x D285mm



101466 W360 x H470 x D185mm



101468 W475 x H260 x D255mm



101675 Food Preparation Refill



101470 National Workplace Refill

CODE	DESCRIPTION
101674	Polypropylene Portable Large Green
101468	Polypropylene Portable Large Red/White
101466	ABS Plastic Wall Mountable Large
101470	National Workplace Refill Pack Only
101675	Food Preparation Refill Pack Only



Order a refill kit, which includes all the contents needed to fully stock your first aid kit and help keep your workplace compliant.



For kit content list go to www.accidental.com.au/first-aid-kits.html

Kit contents may vary from photos shown in this catalogue depending on model selected and component availability at time of manufacture.

** As of 1st Jan 2013 only ACT, NT, TAS and SA have approved the Safe Work Australia First Aid in the Workplace Code of Practice. The onus for assessing each workplace rests with all Australian individual workplaces and sites managing their own risk profile. Accidental Health & Safety makes no representation as to verifying the compliance rating of each workplace / site in respect of the Safe Work Australia First Aid Code of Practice"

Compliance expertise, for more information call 1300 362 327

CODE OF PRACTICE FIRST AID KITS

CODE OF PRACTICE FIRST AID KITS AND REFILL PACKS

These kits are designed to assist with a self assessed workplace rating of "Low Risk" under the Safe Work Australia First Aid Code of Practice.*



- Meets recommended first aid list in the Code of Practice 2012
- Colour coded first aid supplies for ease of use
- Ideal for small workplaces and low risk environments

Our Code of Practice First Aid Kits are suitable for a wide variety of industries. This range makes first aid compliance easier for your workplace, simply choose the kit style that best suits your workplace needs - ABS Wall Mountable or Poly Portable.

FIRST AID KITS



101463 W400 x H140 x D200mm



101461 W285 x H385 x D140mm



101465 Code Of Practice Refill - For All Workplaces



101673 Food Preparation Refill - For Food Industry Workplaces

CODE	DESCRIPTION
101461	ABS Plastic Wall Mountable
101463	Polypropylene Portable Orange/White
101465	Code Of Practice Refill Pack Only
101673	Food Preparation Refill Pack Only



Up-size your First Aid Kit with our quality range of first aid cabinets and kit carry cases, see **page 31**.



For kit content list go to www.accidental.com.au/first-aid-kits.html

Kit contents may vary from photos shown in this catalogue depending on model selected and component availability at time of manufacture.

** As of 1st Jan 2013 only ACT, NT, TAS and SA have approved the Safe Work Australia First Aid in the Workplace Code of Practice. The onus for assessing each workplace rests with all Australian individual workplaces and sites managing their own risk profile. Accidental Health & Safety makes no representation as to verifying the compliance rating of each workplace / site in respect of the Safe Work Australia First Aid Code of Practice"

EYE INJURY MODULE

- Includes items recommended by the First Aid Code of Practice as an addition to first aid kits for workplaces where there is a higher risk of eye injuries
- Sterile irrigation for eyes



For injury treatment posters go to **page 45** or visit www.accidental.com.au



CODE	DESCRIPTION
101685	Eye Injury Module
844189	First Aid For Eyes Poster

BURNS RISK MODULE

- Contains items recommended by the First Aid Code of Practice as an addition to first aid kits for workplaces where workers are at risk of receiving burns
- BurnAid can be an effective alternative where no water is available



CODE	DESCRIPTION
101683	Burns Risk Module
844187	First Aid For Burns Poster

WOUND CARE MODULE

- Contains various dressings for all sorts of injuries
- Ideal addition for first aid kits where there is high risk of cuts and abrasions



CODE	DESCRIPTION
101487	Wound Care Module
844188	Workplace First Aid Poster

FOOD PREPARATION MODULE

- Visually detectable first aid supplies
- Ideal addition for first aid kits in kitchens or food preparation areas



CODE	DESCRIPTION
101488B	Food Preparation Module
873175	Hand Wash Poster

SPRAINS & STRAINS MODULE

- R.I.C.E treatment
- Contains a range of products for treating sprains and strains and other manual handling or sporting injuries
- Ideal inclusion for first aid kits where there is high risk of sprains and strains in the workplace
- Also contains items useful for the treatment of fractures



CODE	DESCRIPTION
101682	Sprains & Strains Module
844395	Soft Tissue Injuries Poster

OUTDOOR MODULE

- Contains items recommended by the First Aid Code of Practice for workplaces where work is performed outside and there is a risk of insect or plant stings or snake bites
- Includes bandages and splint in harmony with Australian Resuscitation Council Guideline 9.4.8 - Pressure Immobilisation Technique for the treatment of deadly bites and stings



CODE
101489B

TRAUMA MODULE

- Ideal inclusion for first aid kits in high risk workplaces where workers are exposed to hazards that could result in serious injury
- Contains items suitable for the treatment of trauma injuries such as bleeding and shock



CODE	DESCRIPTION
101490B	Trauma Module
855383	CPR Wall Chart

REMOTE MODULE

- Contains items recommended by the First Aid Code of Practice for workplaces where people work in remote locations
- Ideal for workplaces with limited access to medical facilities



CODE
101684



For kit content list go to www.accidental.com.au/first-aid-kits.html

Kit contents may vary from photos shown in this catalogue depending on model selected and component availability at time of manufacture.

** As of 1st Jan 2013 only ACT, NT, TAS and SA have approved the Safe Work Australia First Aid in the Workplace Code of Practice. The onus for assessing each workplace rests with all Australian individual workplaces and sites managing their own risk profile. Accidental Health & Safety makes no representation as to verifying the compliance rating of each workplace / site in respect of the Safe Work Australia First Aid Code of Practice

INDUSTRY FIRST AID KITS

FOOD PREPARATION FIRST AID KIT

- Meets and exceeds the Code of Practice for First Aid In The Workplace contents for first aid kits nationally
- Visually and electromagnetically detectable blue waterproof strips compliant with Food Industry Standards
- Strong wall mountable ABS plastic rust proof cabinet
- Ideal for large commercial kitchens and food manufacturing facilities



W360 x H470 x D185mm

CODE	DESCRIPTION
101480	ABS Plastic Wall Mountable
101673	Food Preparation Refill Pack Only



Effective treatment for burns, lacerations etc.

CATERING & CAFE FIRST AID KIT

- Meets and exceeds the Code of Practice for First Aid In The Workplace contents for first aid kits nationally
- Visually and electromagnetically detectable blue waterproof strips compliant with Food Industry Standards
- Highly visible portable first aid kit
- Ideal for small commercial kitchens, cafe's and catering vehicles



101481

101687

CODE	DESCRIPTION
101481	Catering Kit Polypropylene Portable
101687	Café Kit ABS Plastic Wall Mountable

CONSTRUCTION FIRST AID KIT

- Meets and exceeds the Code of Practice for First Aid In The Workplace contents for first aid kits nationally
- Ideal for construction sites and high risk environments
- Heavy duty powder coated metal cabinet with portable pull out emergency run kit
- Designed for the treatment of a range of minor and serious worksite injuries



W460 x H730 x D155mm

CODE
101482

ELECTRICAL CONTRACTORS FIRST AID KIT

- Meets and exceeds the Code of Practice for First Aid In The Workplace contents for first aid kits nationally
- Ideal for electrical contractors working in high risk environments
- This comprehensive kit includes treatment for minor and major burns, electric shocks, snake and insect bites and much more



W355 x H355 x H200mm

CODE
101494

Note. Burns Treatment poster and card included but not shown in photo.

FIRST RESPONSE RUN KIT

- Meets and exceeds the Code of Practice for First Aid In The Workplace
- Ideal work health and safety officer kit and emergency evacuation kit
- Perfect for high risk industries including mining
- Great for shopping centres, security, exhibition and event first aid response
- Designed as a first responder kit, it is well stocked for any workplace medical emergency
- Reflective nylon backed PVC bag, with shoulder and backpack strap options

W500 x H320 x D285mm

CODE
101484



For kit content list go to www.accidental.com.au/first-aid-kits.html

Kit contents may vary from photos shown in this catalogue depending on model selected and component availability at time of manufacture.

REMOTE FIRST AID KIT

- Meets and exceeds the Code of Practice for First Aid In The Workplace contents for first aid kits and remote module nationally
- Tough PVC emergency bag with unique backpack straps, shoulder strap, handles and reflective tape
- Includes treatment for snake bites and SOS emergency rescue sheet
- Contains comprehensive treatment options, including splints, first aid manual, R.I.C.E treatment card and much more



W355 x H355 x D200mm

CODE

101492

SPORTS/TRAINERS FIRST AID KIT

- Meets and exceeds the Code of Practice for First Aid In The Workplace contents for first aid kits nationally
- Ideal for sporting clubs, sports trainers, coaches, and physiotherapists
- Quality products required for the complete care of a sporting team including strapping tape and instant heat and ice packs
- Complete with easy to carry protective zip storage bag



W355 x H355 x D200mm

CODE

101486

REGULATION MARINE FIRST AID KIT

- Compliant to National Standard for Commercial Vessels
- Industrial strength waterproof case
- Designed for fishing vessels and commercial marine
- Includes supplies necessary to treat minor medical conditions and injuries, or to temporarily stabilise a patient



W360 x H460 x D170mm

CODE DESCRIPTION

100141 Scale F Marine Kit

100140 Scale G Marine Kit

Note. Scheduled medicines not provided but are required in Scale G & F first aid kits includes; Hydrocortisone 1% Cream 30g, Panadeine 24's, Sea Sickness Tablets (10), Immodium (8), and Telfast 120mg Tablets (10).



Mark the location of your first aid kit with appropriate signage, on **page 46-47**

GENERAL BOATING KIT

- Sturdy polypropylene plastic case with wall bracket
- Quality first aid products
- Comprehensive general purpose boating first aid kit



W250mm x H185mm x D90mm

CODE

100408

CHILDCARE/SCHOOLS FIRST AID KIT

- Meets and exceeds the Code of Practice for First Aid In The Workplace contents for first aid kits nationally
- Practical, with comprehensive contents to treat most common schoolyard injuries
- Great for excursions, camping trips or outdoor play
- Includes sun protection, snake and insect bite instructions and treatment

CODE DESCRIPTION

101485 Soft Case

101678 ABS Plastic Wall Mountable

101679 Polypropylene Portable



For kit content list go to www.accidental.com.au/first-aid-kits.html

Kit contents may vary from photos shown in this catalogue depending on model selected and component availability at time of manufacture.

PERSONAL & VEHICLE FIRST AID KITS

HANDY PERSONAL KIT

- Easy to use personal kit
- Basic first aid kit



W240 x D40 x H160mm

CODE	DESCRIPTION
100407	Personal Kit
101587	Top Up Pack

Top Up Pack Contains:

- 3 x Wound Cleansing Wipe
- Wound Dressing
- Scissors
- Safety Pins
- Triangular Bandage
- 5cm Conforming Bandage
- Thermal Emergency Blanket
- Paper Tape
- Medium Plastic Bag
- Plastic Strips

ALL PURPOSE FIRST AID KIT

- Sturdy dust resistant ABS plastic case
- Positive snap closure
- Compact and convenient glove-box size
- Includes a broad range of quality, basic first aid products
- Ideal for personal or vehicle use



A portable first aid kit should be provided in the vehicles of mobile workers if that is their workplace.

Source: First Aid in the Workplace Code of Practice, July 2012



W220 x H145 x D55mm

CODE	DESCRIPTION
100400	First Aid Kit
101586	Top Up Pack

Top Up Pack Contains:

- 2 x Wound Cleansing Wipe
- 2 x Sodium Chloride Pods
- Wound Dressing
- Scissors
- Safety Pins
- Triangular Bandage
- 5cm Conforming Bandage
- 10cm Crepe Bandage
- Plastic Strips
- Disposable Splinter Probes
- Cotton Buds
- Eye Pad
- Non-Adherent Dressing
- Tweezers
- Rapaid Antiseptic Cream
- Disposable Resus Face Shield
- Disposable Nitrile Gloves

PERSONAL OUTDOOR & TRAVEL KITS

- Ideal for outdoor adventures, playground duty, lifeguards, forestry workers and bushwalkers
- Outdoor kit has a tough nylon zippered pack with adjustable waist band
- Convenient compact size complete with quality first aid products



101585 W210 x D50 x H140mm

CODE	DESCRIPTION
101585	Travel Kit
19042	Outdoor Kit



19042 W230 x D100 x H100mm

DELUXE PERSONAL FIRST AID KIT

- Ideal for personal or vehicle use
- Practical, popular first aid kit for all applications
- Durable 600D/PVC construction, with double zip closure
- Dust and water resistant
- Comprehensive kit featuring quality first aid inclusions for many emergencies



W230 x H170 x D65mm

CODE
100401



For kit content list go to www.accidental.com.au/first-aid-kits.html

Kit contents may vary from photos shown in this catalogue depending on model selected and component availability at time of manufacture.

PERSONAL & VEHICLE FIRST AID KITS

TRADIES WORK VEHICLE FIRST AID KIT

- Meets Code of Practice for First Aid In The Workplace contents for first aid kits nationally
- Durable polypropylene kit comes complete with wall mount bracket
- Convenient and accessible first aid on the job
- Compact with slim design ideal for stowing in work vehicles



Poly: W250 x H185 x D90mm
Metal: W355 x H250 x D70mm

CODE	DESCRIPTION
100403	Polypropylene
100404	Metal



The Code of Practice for First Aid in the Workplace recommends a portable first aid kit should be provided in the vehicles of mobile workers if that is their workplace.

WORK HEALTH & SAFETY VEHICLE FIRST AID KIT

- Work Health And Safety Compliant Vehicle Kits
- Durable 600D/PVC construction, with double zip closure
- Easy accessibility and convenient compact size
- Fold-out storage
- Kit includes a comprehensive range of quality first aid products
- A must have for emergency situations



W265 x H200 x D75mm

CODE
100402

OUTDOOR/4WD FIRST AID KIT

- Meets and exceeds the Code of Practice for First Aid In The Workplace contents for outdoor workers
- Ideal for off-road/4WD vehicles and outdoor workplace environments
- Tough 660D/PVC bag with shoulder strap, handles and reflective tape
- Attached D rings allow first aid kit to be hung for convenience
- Includes treatment for snake and insect bites, sprains and strains



W355 x H355 x H200mm

CODE
100410

BACKPACK FIRST AID KIT

- Meets and exceeds the Code of Practice for First Aid In The Workplace contents for first aid kits nationally
- Ideal rescue kit for when hospitals are not easily accessible
- Heavy duty purpose and easy access designed backpack
- Pocketed throughout with padded shoulder
- Convenient backpack filled with emergency situation first aid products



W330 x D180 x H410mm

CODE
18865



For kit content list go to www.accidental.com.au/first-aid-kits.html

Kit contents may vary from photos shown in this catalogue depending on model selected and component availability at time of manufacture.

Visit our website www.accidental.com.au

Accidental
Health & Safety

INJURY FIRST AID KITS

TRAUMA FIRST AID KIT

- Meets and exceeds the Code of Practice for First Aid In The Workplace contents for first aid kits nationally
- Ideal for mining, construction, manufacturing and workplaces covering large areas
- Premium nylon backed fabric bag with shoulder strap, reflective tape and adjustable internal dividers
- Designed specifically for high risk environments
- Ideal for immediate care of severe injuries such as major bleeding and trauma



W355 x H355 x H200mm

CODE
101483



For more high risk environment first aid equipment, see **pages 37-40**.

EMERGENCY EYE WASH STATION

- Tough, dust resistant plastic case
- Make accessing eye injury items easy
- Wall mounting bracket
- Specialised quality first aid products for situations where eye injuries may occur



W260 x H200 x D90mm

CODE
100405

EMERGENCY BURNS CARE KIT

- Ideal to keep around work areas where there is a high risk of burns
- Products can be used as an alternative to cold running water
- Comes in a portable case so products are on hand in an emergency
- Kit contains treatment card, burn pads, hydrogels, facemask and dressings



W400 x H140 x D200mm

CODE
101680

EMERGENCY BURNS STATION

- Tough, dust resistant plastic case
- Make accessing burns injury items easy
- Wall mounting bracket
- Specialised quality first aid products for efficient treatment of emergency burns injuries



W260 x H200 x D90mm

CODE
100406

Note. Burns Treatment poster and card included but not shown in photo.



For kit content list go to www.accidental.com.au/first-aid-kits.html

Kit contents may vary from photos shown in this catalogue depending on model selected and component availability at time of manufacture.

INJURY & CUSTOM FIRST AID KITS

SNAKE BITE KIT

- Be prepared for snake bites
- Contains snake bite treatment instructions
- Small and compact for ease of carry



W155 x H115 x D45mm

CODE

30020

Kit Contains

- 2 Crepe bandages
- Snake bite instruction and identification card
- Belt mountable wallet

BITES & STINGS KIT

- Be prepared for bites and stings
- Ideal for working outdoors in remote areas, work sheds, gardens etc



W220 x H145 x D55mm

CODE

101588



SNAKE/INSECT BITE KIT

- Includes bites and stings instructions
- Includes anti-sting relief medication



W140 x H195 x D80mm

CODE

101335

Kit Contains

- 3 x 10cm crepe bandages
- 1 x 7.5cm crepe bandage
- Snake bite instruction and identification card
- Instant cold pack
- Disposable nitrile gloves
- Resuscitation shield
- Tweezers
- 5 Itch relief cream satchel
- 1 Cardboard splint

RESUS KEY RING & SECURITY BELT

- Keep a resus shield handy for unexpected emergencies
- The security belt is designed with a belt loop for convenience
- Made from tough water resistant fabric



873461



19018

Key Ring: W85 x H65 x D10mm

Belt: W155 x H115 x D45mm

CODE DESCRIPTION

873461 Resus Key Ring Black
19018 Security Belt

Belt Contains

- Adhesive strips
- Island dressing
- Wound wipes
- Disposable gloves
- Safety pins
- Triangular bandage
- Resuscitation shield

SHARPS CLEAN UP KIT

- Safely collect and dispose of sharps
- Contains necessary first aid products for sharps clean up, to enable safe disposal



W220 x H145 x D55mm

CODE

30042

Kit Contains

- Instructions for use
- Sharps safe
- Disposable gloves
- Adhesive strips
- Plastic strips
- Gauze swabs
- Chlorhexidine antiseptic
- Pick-up tool

CUSTOMISE YOUR FIRST AID KIT

Print your Company's logo and/or safety message onto these specially designed first aid kits. Talk to your Accidental Representative for more information.

- Promotional gifts
- Company branding
- Safety awards
- Employee gifts



Go to www.accidental.com.au/custom and design online.



For kit content list go to www.accidental.com.au/first-aid-kits.html

Kit contents may vary from photos shown in this catalogue depending on model selected and component availability at time of manufacture.

Compliance expertise, for more information call 1300 362 327

Accidental
Health & Safety



SIMPLE AND EASY

FAC develops quality products that are simple and easy to use, suitable to the industrial environment. The first aid supplies are colour coded and have basic instructions on packaging to ensure anyone can use the product. Keeping in mind that our first aid officers and staff are not doctors or nurses and our first aid kits and products are designed with our everyday customers in mind making applying first aid simple and easy!

Colour Coded First Aid Kit

Dressings
Personal Protection
Burn Treatment
Wound Cleansing
Miscellaneous



FOR PRICING AND BULK DISCOUNTS GO TO WWW.ACCIDENTAL.COM.AU

FINGER/KNUCKLE DRESSINGS

- Ideal dressing for awkward fingertip and knuckle wounds
- Industrial strength tough adhesive
- Sterile



CODE
872261

KNUCKLE DRESSINGS

- Non-stick wound pad
- Industrial strength tough adhesive
- Perfectly cut dressings for knuckle wounds
- Sterile



CODE
872263

FINGERTIP DRESSINGS

- Flexible fabric dressing
- Perfectly cut dressings for fingertip wounds
- Industrial strength tough adhesive
- Sterile



CODE
872262

PREMIUM FABRIC STRIPS

- Conformable
- Non-stick wound pad
- Ventilated
- Industrial strength tough adhesive
- Sterile



W25 x L72mm

CODE
872260

PREMIUM PLASTIC STRIPS

- Ventilated
- Non-stick wound pad
- Conformable
- Sterile



W19 x L72mm

CODE
872290

PREMIUM SHEER PLASTIC STRIPS

- Wallet size pack of 10
- Ideal for vehicle, purse and pocket
- Sterile



CODE
69045

PREMIUM FABRIC DRESSING STRIP

- Cut to size
- Non-stick wound pad
- Conformable
- Ventilated
- Extra hold tough adhesive



CODE	DESCRIPTION
872255	60mm x 0.5m
872256	72mm x 1m

SPRAY BANDAGE

- One solution for all minor cuts and scrapes
- Seals out water, dirt and bacteria
- Transparent and breathable
- Stays on for more than two days



CODE	DESCRIPTION
07904	Elastoplast Spray Bandage 30g
00050	Opsite Spray 100ml

FINGER STALLS

- Bandage protection
- Latex
- Disposable
- Blue is HACCP endorsed



CODE	DESCRIPTION
34100	White Finger Cots Large Pk100
101392	Blue Finger Cots Large Pk144

BLUE DETECTABLE PLASTIC STRIPS

- Waterproof adhesive
- Non-stick wound pad
- Ideal for the food industry
- Visually and electromagnetically detectable
- Sterile
- Extra wide

W25 x L72mm

CODE

872242



BLUE DETECTABLE ASSORTED DRESSINGS

- Visually and electromagnetically detectable
- Ideal for the food industry
- Cut to fit knuckle and fingertip injuries
- Waterproof
- Non-stick wound pad
- Sterile



For antiseptic liquids and wipes, see **page 25**.

CODE

872240



BLUE DETECTABLE DRESSING STRIP

- Visually and electromagnetically detectable
- Ideal for the food industry
- Non-stick wound pad
- Conforming

W75mm x L1m

CODE

872241



WOUND CLOSURES

- Wound closure strips hold wound edges firmly in place
- Greater resistance to infection than sutures or staples
- Hypoallergenic and sterile



CODE DESCRIPTION

41540	Adhesive Closure 3 x 75mm
41541	Adhesive Closure 6 x 75mm
41542	Adhesive Closure 6 x 38mm
41543	Adhesive Closure 12 x 100mm
42876	LeukoStrip Wound Closure 4 x 38mm Pk8
42903	LeukoStrip Wound Closure 4 x 76mm Pk4
67500	Butterfly Closures 10 x 46mm Pk10



ISLAND DRESSING

- Ideal for dressing cuts, lacerations and sutured wounds
- Highly absorbent
- Built-in non-adherent pad
- Conforms to body contours



CODE DESCRIPTION

101306	7.5 x 5cm Box 50
101307	8 x 10cm Box 50
101304	15 x 10cm Box 20
101305	20 x 10cm Box 20

PARRAFIN GAUZE DRESSING

- Allows air and moisture to pass
- Effective for treatment of minor burns, blisters and weeping wounds
- Non-adherent
- Assists wound healing
- Sterile



CODE DESCRIPTION

45582	Cuticerin 7.5 x 7.5cm
40012	Bactigras 5 x 5cm
40011	Bactigras 10 x 10cm

FILM DRESSING

- Blocks out water, dirt and germs
- Facilitates wound healing
- Breathable flexible film
- Minimises scarring
- Transparent dressing



CODE DESCRIPTION

101327	10 x 12cm Box 25
101326	6 x 7cm Box 50

SPENCO® 2ND SKIN DRESSING KIT

- Soothes and cools
- Provides protection from rubbing, pressure and friction on the skin where blistering may result
- Kit contains 2 sheets 3" x 6.5" and 6 sheets of adhesive knit to protect skin and keep dressing in place



CODE

37950

DRESSINGS

DRESSING PACK

- Sterile use
- Pack contains 3 disposable forceps, 5 gauze swabs, dressing tray, paper towel and plastic work sheet



CODE

40015

COMBINE DRESSINGS

- Highly absorbent thick layer of cotton/rayon fleece
- Enclosed in either non-woven, or gauze fabric
- Sterile single use pack



CODE DESCRIPTION

872250 10 x 10cm

872251 10 x 20cm

872252 20 x 20cm

25825 20 x 30cm

NON-ADHERENT DRESSINGS

- Non-adherent wound contact layer will not stick to the wound, making it easy to remove
- Highly absorbent pad
- Cushions and protects wound



CODE DESCRIPTION

873420 Dressing 5 x 5cm Box 100

873421 Dressing 10 x 10cm Box 100

101309 Dressing 10 x 20cm Box 50

871910 Dressing 5 x 7.5cm Pk10

871911 Dressing 7.5 x 10cm Pk10

22525 Adhesive Tabs 5 x 7.5cm Pk10

22500 Adhesive Tabs 7.5 x 10cm Pk10



MULTI-TRAUMA DRESSINGS

- Sterile
- Highly absorbent
- Padding cushions and protects wounds



CODE DESCRIPTION

101701 20cm x 90cm Large

101702 20cm x 40cm Small

WOUND DRESSING

- Pressure dressing
- Single use
- Copious gauze wadding
- Built-in gauze bandage
- Sterile



CODE DESCRIPTION

879104 No. 13

871903 No. 14

871902 No. 15

UNIVERSAL DRESSINGS

- Assists in stopping life threatening bleeding from deep wounds
- Helps stabilise an impaled object
- Highly absorbent
- Sterile



CODE DESCRIPTION

37395 43 x 20cm

22875 91 x 20cm

BURNS DRESSINGS

- Non-adherent contact layer prevents dressing sticking to wound
- Provides cool, moist and soothing relief helping to protect the wound
- Apply to 1st and 2nd degree burns
- Cools as water evaporates
- Sterile



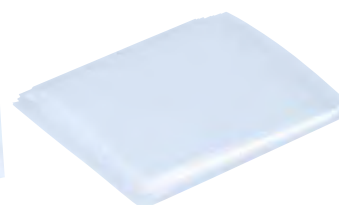
CODE DESCRIPTION

871933 75 x 75cm

37375 70 x 220cm

STERILE PLASTIC SHEETS

- Used for covering burns loosely
- Prevent the risk of contamination



CODE DESCRIPTION

101477 Medium 60 x 45cm

101478 Large 61 x 91cm

GAUZE SWABS

- Ideal for cleaning spatters
- Can be soaked in antiseptic liquid and used to wipe wounds clean
- Non-sterile



CODE	DESCRIPTION
872275	5cm Pk100
872274	7.5cm Pk100
26100	10cm Pk100

COTTON TIPS AND WIPES

- Use to clean wound site with or without products



CODE	DESCRIPTION
20490	Cotton Buds 7.5cm Pk5
872253	Cotton Buds Pk100
20501	Cotton Balls Pk5 Sterile
21275	Dove Cotton Squares Box 80

STERILE GAUZE PIECES

- Can be used for cleaning and covering of wounds
- Used to place over a wound before taping, strapping or bandaging
- Sterile



CODE	DESCRIPTION
873120	7.5cm Pk5
26250	7.5cm Pk3
21375	10cm Pk5
21376	10cm Pk3

BANDAGE CLIPS & PINS

- Secure bandages in place



12049



37525

CODE	DESCRIPTION
12049	Bandage Clip
37525	Safety Pins Assorted Pk12

CONFORMING BANDAGES

- Conforms to limb
- Keeps dressing securely in place
- For dressing retention on high body movement areas
- Stretches to 4m in length



CODE	DESCRIPTION
871909	2.5cm x 1.8m
871908	5cm x 1.8m
871907	7.5cm x 1.8m
871906	10cm x 1.8m

MEDIUM SUPPORT CREPE BANDAGES

- Stretches to 4m in length
- Ideal for light compression to reduce swelling
- Offers medium support to a bandaged limb
- Washable and reusable
- Non-fraying edges



CODE	DESCRIPTION
871916	5cm x 2m
871917	7.5cm x 2m
871918	10cm x 2m
871919	15cm x 2m

HEAVY SUPPORT CREPE BANDAGES

- For moderate compression to reduce swelling
- Strong support following strains and sprains
- Stretches to 5m in length
- Washable and reusable
- Non-fraying edges



CODE	DESCRIPTION
871912	5cm x 2m
871913	7.5cm x 2m
871914	10cm x 2m
871915	15cm x 2m

TUBULAR BANDAGES

- Ideal for holding dressings in place and for the secure protection of finger injuries
- Quick and easy to cut to size and apply
- Can be used for more support as a finger stall
- Comes with plastic finger applicator
- 5m in length



CODE
101339

COHESIVE BANDAGES

- Sticks only to itself, no clips or pins required
- Lightweight, porous and comfortable
- Maintains your desired compression or tension over time



CODE	DESCRIPTION
101313	2.5cm x 4.5m Tan
101314	5cm x 4.5m Tan
101315	7.5cm x 4.5m Tan
101312	10cm x 4.5m Tan
45105	2.5cm x 2.5m Blue

TRIANGULAR BANDAGE

CLOTH

- Natural cotton
- Over-locked edging to resist fraying

DISPOSABLE

- Non-woven material
- Ideal for single use



CODE	DESCRIPTION
871901	Cloth 110 x 110 x 155cm
871900	Disp. 110 x 110 x 155cm

TAPES

ZINC OXIDE ADHESIVE TAPE

- Rigid flesh coloured tapes
- Highly durable and long lasting
- Porous, allowing skin to breathe



CODE	DESCRIPTION
871924	1.25cm x 5m
871923	2.5cm x 5m

WATERPROOF

- Leukoplast® tape
- White, rigid, waterproof tape
- Strong adhesive for long lasting wear
- For wet, dirty conditions and outdoor wear



CODE	DESCRIPTION
42321	1.25cm x 5m
42322	2.5cm x 5m
42324	5cm x 5m

ELASTIC

- Leukoplast® elastic tape
- High stretch, flesh coloured tape
- Flexible to conform to body movement
- Strong adhesive for long lasting wear



CODE	DESCRIPTION
41071	2.5cm x 2.5m
41072	5cm x 2.5m
41073	7.5cm x 2.5m

GENERAL PURPOSE

- Leukoplast® tape
- Strong adhesive for long lasting wear
- Porous, allowing skin to breathe
- Well tolerated by normal skin
- Skin toned, rigid tape



CODE	DESCRIPTION
41521	1.25cm x 5m
41522	2.5cm x 5m
41524	5cm x 5m
41525	7.5cm x 5m

HYPOALLERGENIC & WATERPROOF

- Leukoflex® tape
- Sheer, flexible, waterproof tape
- Conforms to body movement
- Cosmetically appealing



CODE	DESCRIPTION
41122	2.5cm x 5m
41124	5cm x 5m

ADHESIVE TAPE PAPER

- Porous paper tape
- Hand tearable
- Tape comes with dispenser



CODE	DESCRIPTION
54900	1.25cm x 5m
54950	2.5cm x 5m

HYPOALLERGENIC

- Leukosilk® tape
- White, hypoallergenic cloth tape
- Exceptionally strong yet gentle on the skin
- Water repellent
- Hand tearable
- Porous, allowing skin to breathe



CODE	DESCRIPTION
41021	1.25cm x 5m
41022	2.5cm x 5m
41024	5cm x 5m

BLUE WATERPROOF TAPE

- Visually detectable tape
- Waterproof
- Cut to size to suit your requirements
- 2.5cm x 5m



CODE
101074

MICROPORE™ PAPER TAPE

- Hypoallergenic paper tape
- Allows skin to breathe
- For extra sensitive skin or damaged skin
- Removal is easy and painless



CODE	DESCRIPTION
40009	12mm x 9m Roll
15301	25mm x 9m Roll
40010	Tape w/ Dispenser 12mm x 9m
15351	Tape w/ Dispenser 25mm x 9m

NON-WOVEN RETENTION TAPE

- Self-adhesive, non-woven fabric tape for dressing retention
- Combines security with comfort
- Easily conforms around joints and body contours
- Provides complete coverage of dressings
- Reduces the risk of contamination

CODE	DESCRIPTION
24209	5cm x 10m Roll
24210	10cm x 10m Roll



SPORTS TAPE

- Used as structural support for shoulder, ankles, knees and elbows
- Premium quality and highly durable
- Flesh coloured with pink edges
- Consistent support to stabilise or prevent injuries
- Hand tearable



CODE	DESCRIPTION
69010	25mm x 13.7m Drum of 12
69015	38mm x 13.7m Drum of 8
69020	50mm x 13.7m Drum of 6

INSTANT HEAT PACK

- Heats to 43°C
- Non-toxic
- Up to 30 minutes heat
- Ideal for treatment of muscle pain
- Easy to use
- Conveniently portable



W140 x L215mm

CODE
29530

REUSABLE DELUXE HOT/COLD PACKS

- Versatile cold or hot use
- Includes towelling sleeve
- Comes in vinyl storage pouch
- Robust construction



CODE	DESCRIPTION
36650	Small - 130 x 280mm
36625	Large - 170 x 280mm

COOL-IT SPRAY

- Instant cooling action
- To use simply spray directly onto wet gauze until frozen
- Not to be sprayed directly onto skin
- 200g



CODE
00020

STRAPPING TAPE

- Provides rigid support for joints
- Flesh coloured zinc oxide tape
- Moulds to body contours easily and assists in healing wounds



CODE	DESCRIPTION
872310	2.5cm x 15m
872311	3.8cm x 15m
872312	5cm x 15m

INSTANT COLD PACKS

- Quick instant cooling for remote applications
- Robust - double welded
- Approximately 20 minutes of cooling



Great for sprains and strains!



CODE	DESCRIPTION
871925	Small
871926	Large

REUSABLE ECONOMY HOT/COLD PACK

- Versatile cooling or hot use
- Robust construction
- Quality product
- Convenient and easy to use



W150 x L265mm

CODE
29500



For first aid on the go, see our complete Sports/Trainers First Aid Kit on **page 13**.



EYE CARE

REFRESH™ EYE DROPS

- Revitalises irritated, dry, tired eyes
- Single use container 0.4ml
- Preservative free
- Economical



CODE	DESCRIPTION
100270	0.4ml x Pk10
03481	0.4ml x Pk30

CELLUVISC® EYE DROPS

- Specifically formulated to relieve severe eye irritation such as welder's flash
- Single use container 0.4ml
- Preservative free
- Economical



CODE
04554

OPTREX EYE WASH

- Soothing and cooling
- Mild antiseptic lotion
- For relief of minor eye irritations such as dust, smoke, etc
- Sterile when packaging intact
- Includes eye bath



CODE
11600

EYE PADS

- Single use
- Absorbent
- Non-woven cover
- Sterile
- Pack of 5



CODE
873405

REFRESH PLUS® EYE DROPS

- Specifically formulated to relieve moderate dry eye
- Single use container 0.4ml
- Preservative free
- Advanced electrolyte formula



CODE
04558

PLASTIC MAGNIFIER

- Visual aid
- To assist in the removal of small fragments from the skin
- Small, compact size for easy storage in any first aid kit



CODE
41350

STERILE EYE IRRIGATION

- 0.9% sodium chloride solution
- Sterile when container intact
- Also useful with hard and soft contact lenses
- Ideal for eye wash and irrigation



CODE	DESCRIPTION
101055	20ml Pk5
100136	20ml
873398	30ml
11900	500ml

EYE IRRIGATION PACK

- Simple to open and use
- Hygienic single use product
- Handy wall plate for easy access



11960



11940

CODE	DESCRIPTION
101154	Pack 500ml
11940	Wall Plate 500ml
101155	Pack 100ml
11960	Wall Plate 100ml



UNISAFE EMERGENCY EYE SHOWER BOTTLE WASH

- A simple solution for emergency eye irrigation
- Simply fill the bottle with sterile saline solution, place over affected eye and squeeze bottle to supply gentle irrigation
- Reservoir drain takes used fluid away from eye cup



For eyewash stations, see page 39.



CODE
40002

POVIDONE – IODINE WIPES

- Ideal antiseptic for skin preparation prior to any minor invasive procedure
- Individually wrapped
- 10% Povidone-Iodine solution
- Box 100



CODE

871930

ALCOHOL WIPES

- Primarily used for skin cleansing prior to injection
- Individually wrapped isopropyl alcohol
- Box 100



CODE

871929

ANTISEPTIC WIPES

- Individually wrapped antiseptic wipes



CODE	DESCRIPTION
06800	Skin-Prep Box 100
871920	Wound Wipes Box 10
22023	Wound Wipes Box 50
22024	Wound Wipes Box 100

BETADINE® ANTISEPTIC

- Hospital quality antiseptic
- Brown colour indicates area of activity
- Solution, liquid and spray effectively clean: minor burns, abrasions, skin infections
- Ointment is suitable for use on fungal and bacterial skin infections, minor burns

CODE	DESCRIPTION
01700	Liquid 15ml
01800	Solution 100ml
02200	Solution 500ml
02210	Liquid Spray 75ml
03200	Ointment 25g



POVIDONE IODINE SPRAY

- Pump pack for no touch application
- Keeps contents uncontaminated to extend product's useful life
- Ideal first aid kit inclusion
- Handy 100ml size antiseptic solution spray



CODE

09710

HEALID CREAM

- For general relief of blisters, sunburn, cuts, nappy rash, sores and haemorrhoids
- Effectively aids in the healing process



CODE

10010

DETTOL® ANTISEPTIC LIQUID

- Antiseptic wash
- Ideal for cleansing wounds



CODE	DESCRIPTION
61000	125ml
61100	250ml
61050	500ml

CHLORHEXIDINE AND CETRIMIDE

- 30ml container
- Sterile if container intact



CODE

04100

Note: Not for eye irrigation

RAPID ANTISEPTIC CREAM

- Contains tea tree oil
- Available in a tube or in single use sachets



CODE	DESCRIPTION
09755	Sachet Pk10
09749	25g Tube
09750	50g Tube

RAPID ANTISEPTIC SPRAY

- Natural antiseptic containing tea tree oil
- Treats cuts, abrasions and infections
- No staining and non-greasy
- Pump pack for no touch application
- 50ml spray



CODE

09851

ANTISEPTIC POWDER

- Useful in treating weeping wounds, minor cuts, abrasions, tinea, minor burns and scalds
- Effectively cleanses wounds



CODE

05000

BURNS, BITES & STING RELIEF

HAMILTON PEDOZ ANTISEPTIC FOOT POWDER

- Antifungal, antibacterial deodorant and lubricating powder
- Used to combat foot infections such as tinea and foot odour



CODE	DESCRIPTION
63000	50g
63050	375g

RAPID ITCH RELIEF CREAM

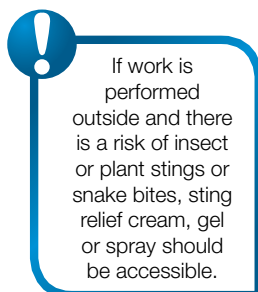
- Single use
- Eliminates cross contamination
- Comes in a pack of 10 Sachets



CODE
100003

STINGOSE SPRAY AND GEL

- Helps minimise pain, inflammation and itching associated with bites and stings
- Relieves irritations caused by most insects and plants, including ants, bees, wasps, mosquitoes, sandflies, sea lice, vines and nettles



CODE	DESCRIPTION
09100	Gel 25g Tube
64050	25ml Spray
64100	100ml Spray

BURNAID™ BURN DRESSINGS

- Cooling relief for up to two hours
- Cools by drawing heat out of the burn
- Sterile barrier against contamination
- Non-adherent
- In excess of 90% water



For Burns Module, see **page 11**, and see **page 16** for complete Emergency Burns Care Kit.



CODE	DESCRIPTION
00300	10 x 10cm
00305	20 x 20cm
00309	Face Mask 40 x 30cm

RAPID RASH RELIEF

- Fast relief from rashes, chafing and skin irritations
- A soothing powder containing tea tree oil, corn starch and zinc oxide
- Helps prevent tinea and foot odour



CODE
63040

STOP ITCH CREAM

- Fast relief from pain and itching
- Effectively aids irritations caused by mosquitoes, bees, sandflies, jellyfish, minor burns, rashes, cuts, scratches and sunburn



CODE
64150

CALCIUM GLUCONATE

- Effective in treating hydrofluoric acid burns
- Ideal for electroplating, iron and steel manufacturing, laboratories, machinery manufacturing and repair industries



CODE	DESCRIPTION
60300	Calcium Gluconate Gel 50g
60303	CaLSource 1000MG Tablets Pk10

BURNAID™ BURN GEL

- Cools and soothes
- Water soluble gel that can be rinsed off
- Non toxic
- Sterile



CODE	DESCRIPTION
00240	Sachet 3.5g Pk10
00225	25g Tube
00250	50g Tube

DISINFECT-IT WIPES

- Individually wrapped disinfecting wipe
- Great for wiping down office equipment
- Leaves equipment clean and hygienic
- Box 100



CODE

00010

VIRACLEAN DISINFECTANT

- Pink liquid with lemon fragrance
- Non-flammable
- Safe on all surfaces
- Neutral pH
- Fully biodegradable



CODE DESCRIPTION

89349 500ml Pump Pack
89351 5L
89350 500ml Squeeze Pack

BIOHAZARD KIT

- Workcover and NSW Health Compliant
- Guard yourself from accidental infection



CODE DESCRIPTION

873456 Clean Up Kit
873457 Refill Kit
873458 200g Sachet

HAND SANITISER WITH VITAMIN E

- Kills 99.9% of germs
- Cleans hands, anywhere, anytime



CODE DESCRIPTION

101150 100ml
101151 250ml

HAND SANITISER

- Antibacterial sanitising gel
- Kills germs
- No water required
- Non-greasy



CODE DESCRIPTION

101145 50ml Hand Foamer
91182 Hand Gel Pump 1L
91183 Flip Top Hand Gel 150ml
91336 A/B Sanitising Hand Gel 5L

BLOOD AND VOMIT CLEAN-UP

- Absorbent and deodorising
- Convenient twist lock vomit bag prevents leakage and spills



CODE DESCRIPTION

18506 Vomit Clean Up 120g Satchet
18503 Vomit Clean Up 3kg Barrel
18507 Vomit Clean Up 15kg Pail
35226 Vomit Bag 1500ml
101703 Vomit Bag Dispenser
79804 Blood Spill Kit

BACTERICIDAL WIPE

- Hospital grade disinfectant wipes
- Used on hard surfaces that has been previously cleaned
- Suitable for use by dentists, GP's, hospitals, physiotherapists, laboratories and optometrists



CODE DESCRIPTION

41561 Isowipes 75 Canister
41564 Wall Mount Bracket For Isowipes 75
41565 Isowipes 75 Refill Pack, Carton 12

AVAGARD ANTISEPTIC SOLUTION

- Contains Chlorhexidine Gluconate 0.5%
- Waterless hand rub antiseptic
- It is fast drying and compatible with most skin types



CODE DESCRIPTION

21776 500ml Pump
21777 125ml Bottle

ABSORBENT CLEAN-UP POWDER

- 100% natural, ecologically safe and non-toxic
- Eliminate toxic and noxious odours
- No shelf life
- Absorbs excess moisture to thicken spills
- Uses pure and milds powder, ensuring no dust inhalation



CODE DESCRIPTION

873453 1kg
873454 5kg

PHARMACY

HERRON®

- Suitable for general pain relief
- Contains 500mg paracetamol
- Rapid relief from pain
- Pack of 20 tablets



CODE

26703

ASPIRIN

- Effervescent tablets dissolves quickly in water
- Effective relief of headache, migraine, toothache and period pain
- Pack 20 tablets



CODE

75060

SPECIALISED CREAMS

- Hirudoaid is used for the treatment of bruises, scars and veins
- Magnoplasm used as a drawing ointment



CODE DESCRIPTION

62250	Hirudoaid 40g
06700	Magnoplasm 100g

BLUE NITRILE GLOVES

- Ideal first aid glove
- 5 pairs of gloves
- Non latex



Always try to wear gloves before treating casualty.

CODE

871922

NUROFEN®

- Suitable for headaches, back pain, period pain, dental pain and fever
- Contains 200mg ibuprofen
- Pack of 20 tablets



CODE

12601

MYLANTA®

- Helps relieve the symptoms of heartburn, acid indigestion and upset stomach



CODE

55210

METSAL® HEAT RUB

- Provides temporary relief from pain associated with strains of joints and muscles including arthritis, rheumatism, lumbago and fibrositis



CODE DESCRIPTION

62650	50g
62550	125g

NITRILE GLOVES

- Latex free
- Ambidextrous
- Non-sterile
- Lightly powdered
- Disposable
- Box of 100 gloves



CODE DESCRIPTION

36424	Small
26850	Medium
36428	Large
36429	X-Large

PANADOL®

- Provide fast, effective temporary relief of aches and pains
- Easy to swallow tablets and mini capsules



CODE DESCRIPTION

75580	Minicaps Pk20
75660	Tablets Pk20

HEAT GELS

- Provide fast, temporary relief from muscular aches and pains, sprains and back pain



CODE DESCRIPTION

60630	Dencorub 100g
60550	Deep Heat 140g
21100	Deep Heat 100g
60600	Deep Heat 50g

ANTI-INFLAMMATORY GEL

- Used to relieve pain associated with recent muscle or joint injuries such as sprains, strains and sports injuries



CODE DESCRIPTION

34415	20gm
34414	50gm
34852	100gm

LATEX GLOVES

- Ambidextrous
- Non-sterile
- Lightly powdered
- Disposable
- Box of 100 gloves



CODE DESCRIPTION

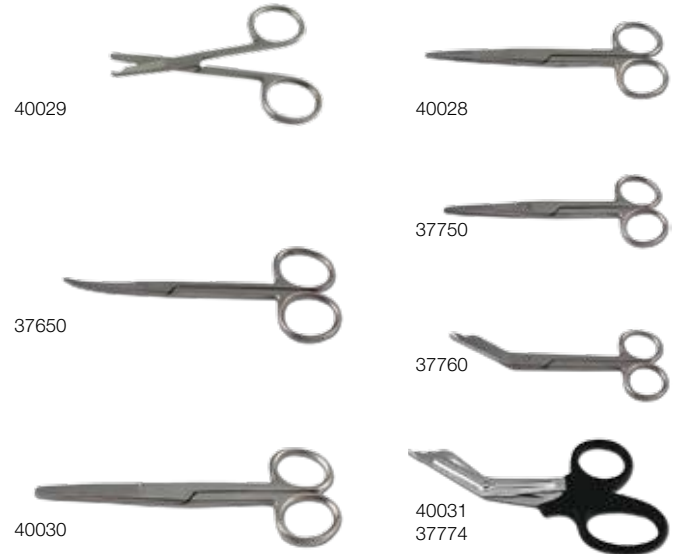
36224	Small
36225	Medium
36226	Large
36227	X-Large

FORCEPS



CODE	DESCRIPTION
35950	Forceps Disposable Sterile
35975	Forceps Fine Stainless Steel 12.5cm
35900	Forceps Blunt Stainless Steel 12.5cm
36025	Forceps Mosquito Stainless Steel 14cm
35906	Forceps Angle Perry Stainless Steel 15cm
40024	Forceps Superfine Stainless Steel 12.5cm
63750	Forceps Fine Stainless Steel 7.5cm
35910	Forceps Stainless Steel With Magnifying Glass

SCISSORS



CODE	DESCRIPTION
40029	Scissors Stitch Stainless Steel 7.5cm
37650	Scissors Iris Stainless Steel 11.5cm Curved
40030	Scissors Stainless Steel 12.5cm Blunt/Blunt
40028	Scissors Stainless Steel 12.5cm Sharp/Sharp
37750	Scissors Stainless Steel 12.5cm Sharp/Blunt
37760	Scissors Lister Bandage Stainless Steel 14cm
40031	Scissors Universal Trauma 19cm Large
37774	Scissors Universal Trauma 14.5cm Small

SPLINTER PROBES & TWEEZERS

- Splinter probes are disposable and hygienically clean
- Safe and easy to use



CODE	DESCRIPTION
38010	Tweezers
872316	Splinter Probe Disposable Pk10

AMPUTATED PARTS MODULE

- 2 x small plastic bags
- 2 x medium plastic bags
- 2 x large plastic bags
- 1 x biohazard bag



CODE
871932

PLASTIC INSTRUMENTS



CODE	DESCRIPTION
10000	Eye Bath
25950	Gallipot Disposable
36750	Kidney Dish 160mm Green
37000	Medicine Measure Disp. 30ml
37010	Medicine Measure Tumbler 60ml

THERMAL RESCUE BLANKET

- Aluminium film blanket
- Useful in retaining body heat
- Ideal for treating shock



CODE
24150

MINI SHARPS CONTAINER

- Easily identifiable hazard yellow
- Hazard warning on container



For more Sharps Containers and contamination disposal products, see **page 33**.

CODE
37815

DISPOSABLE RESUSCITATION SHIELD

- Prevent cross contamination
- Large surface area to provide extra protection
- Compact, hygienic and easy to store
- Necessity for all first aiders



CODE
871928

FIRST AID INSTRUCTIONS & REPORTING

FIRST AID GUIDES

- Easy to follow photos
- Full colour throughout



CODE	DESCRIPTION
39202	First Aid Made Easy Manual
39200	Easy First Aid Booklet

BURNS TREATMENT CARD

- Ensures you provide adequate treatment in an emergency
- Easy to follow instructions for the treatment of burns and scalds



CODE
873438

FIRST AID IDENTIFICATION

- Specially woven badge that simply irons on to your clothing
- Easily identify your first aid officer



L50 x W50mm

CODE
47882

CPR CARD/STICKERS

- Ideal memory aid in an emergency
- Card fits in your wallet or purse
- Stickers are great for first aid kits



CODE	DESCRIPTION
39550	Pocket Card 114 x 88mm
39600	Sticker 150 x 105mm

SNAKE BITE TREATMENT CARD

- Helps to provide adequate treatment in an emergency
- Easy to follow step by step instructions
- Includes poisonous snake Identification chart



CODE
85574S

HARD HAT EMBLEMS

- Emblems are self sticking
- B-946 indoor/outdoor vinyl film
- 4 per card
- 51mm diameter



49569



42232



42241



45330



45332



49554



42263



42233

REGISTER OF INJURIES

- Ensure all injuries have been correctly documented
- Register of injuries book contains 20 duplicate pages numbered consecutively for easy tracking and comes with a pen



CODE	DESCRIPTION
871927	Register Of Injuries Book And Pen
87552	Notebook

FIRST AID KIT STICKERS

- Vinyl stickers for identifying your first aid kit



CODE	DESCRIPTION
39377	50 x 130mm
39400	80 x 105mm
40034	125 x 165mm

FIRST AID CABINETS & CARRY CASES

PLASTIC WALL MOUNT CABINETS

- Tough ABS plastic
- Distinctive identification
- Smaller model with door pocket
- Larger model with door shelves and clear acrylic retainers
- A great workplace first aid cabinet



15170



15175

CODE	DESCRIPTION
15175	Large W360 x H470 x D185mm
15170	Small W285 x H385 x D140mm

METAL WALL MOUNT CABINETS

- Robust steel construction with quality powder coat finish
- Distinctive identification and key lockable
- Larger kit features pullout portable kit container
- Allows plenty of room to expand your kit



40006



30334

CODE	DESCRIPTION
40006	Medium W360 x H450 x D150mm
30334	X Large W460 x H730 x D155mm

PORTABLE CASES & PARAMEDIC POUCH

- Easily maneuvered in an emergency
- Pouch features belt loop, dual compartments and multiple pockets
- Cases include organised compartments and are made from polypropylene



15541



85281



100361

W460 x 175H x D285mm

W475 x H260 x D255mm

CODE	DESCRIPTION
15541	Plastic Box Carry Clip Large
15185	Orange Polypropylene Portable
100361	Box 2 Tray Red/White Large
85281	Paramedic Pouch Empty Black

PORTABLE RED SOFT BAGS

- Nylon backed fabric bags with multiple compartments and adjustable internal dividers
- Go anywhere portable first aid bags



18555



18560

Large: W320 x H500 x D285mm

Medium: W355 x H355 x D200mm

CODE	DESCRIPTION
18560	Large Red
18555	Medium Red

FIRST AID BAGS

- Practical first aid bags
- Ideal for portability
- Multiple compartments for your first aid supplies



18654



15400G



18655

CODE	DESCRIPTION
18654	Bag w/ Handles Green
18655	Bag w/ Fold Out Mat
15400G	Backpack Green

Note: Bags come empty, photo for illustration purposes only.

WATERPROOF CARRY CASE

- Tough polypropylene construction
- Manual pressure equalisation valve
- Ideal for marine applications
- Great waterproof or dustproof storage solution



W425 x H285 x D155

CODE
100035

MONITORS & EQUIPMENT

THERMOMETERS

DIGITAL THERMOMETER

- Range 32°C – 41.9°C
- Accuracy $\pm 0.1^\circ\text{C}$ (between 35°C and 39°C)
 $\pm 0.2^\circ\text{C}$ (under 35°C and over 39°C)

FLAT GLASS THERMOMETER

- Range 35°C – 42°C
- Comes with protective case



CODE	DESCRIPTION
38226	Digital
38250	Flat Glass

INFRA-RED EAR THERMOMETER

- Simple, one button operation
- Accurate reading, ready beep indicates correct positioning
- Measures temperature in just seconds



CODE	DESCRIPTION
101320	Infra-Red Ear Thermometer
101321	Thermometer Ear Covers Pk20

EXAMINATION TORCH

- Pocket size penlight with pocket clip
- Press down pocket clip to activate light
- Easy to see pupil gauge



CODE
06400

BLOOD PRESSURE MONITOR

- Fully automatic inflation and deflation
- Large and easy to read display
- 14 sets of data memory
- Durable fan shaped cuff
- Compact design



CODE
86740

SPHYGMOMANOMETER

- 300mm Hg no stop pin manometer
- Latex bladder and bulb
- Chrome plated deflation valve
- Leatherette zippered case



CODE
86751

MAGNIFIER HEADBAND

- Can be worn with glasses
- Secures to head with velcro straps
- Magnifying power x1.8 and x2.3
- Flip down attached accessories for extra magnifying power up to x4.8



CODE
70100

PARAMEDIC KIT

- Kit contains trauma scissors, blunt and sharp scissors and tethoscope dual
- Pouch features belt loop, dual compartments and multiple instrument pockets
- For the professional first aider

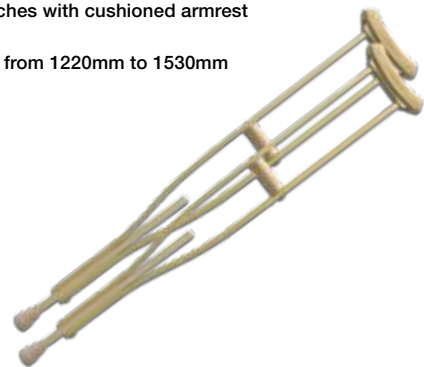


W120 x H225 x D45mm

CODE	DESCRIPTION
85280	Pouch Kit Complete
85281	Pouch Only

CRUTCHES

- Wooden crutches with cushioned armrest
- Lightweight
- Adjust height from 1220mm to 1530mm



CODE
20441

MISCELLANEOUS



37525

CODE	DESCRIPTION
12049	Bandage Clip
37525	Safety Pins Assorted Pk12
38010	Tweezers
872316	Splinter Probe Disposable Pk10



872316



12049



38010

DISHES & SHARPS CONTAINMENT

PLASTIC AND STAINLESS STEEL WARE

PLASTIC WARE

- Non-sterile plastic
- Intended for single use

STAINLESS STEEL WARE

- Durable
- Autoclavable
- Reusable



CODE	DESCRIPTION
10000	Eye Bath
25950	Gallipot Disposable
36750	Kidney Dish 160mm Green
37000	Medicine Measure Disp. 30ml
37010	Medicine Measure Tumbler 60ml
35251	Canister/Lid Stainless Steel 127 x 165mm
36150	Gallipot Stainless Steel 110mm
36850	Kidney Dish Stainless Steel 20cm
36875	Kidney Dish Stainless Steel 25cm



SHARPS CONTAINERS

- Easily identifiable hazard yellow
- Hazard warning on container
- Metal wall/trolley mountable brackets also available



CODE	DESCRIPTION
37815	Sharps Container 100ml
37822	Sharps Container 1.4Lt
40032	Sharps Container 2Lt
37850	Sharps Container 4.5Lt
37851	Bracket Wall/Trolley for 2Lt
37852	Bracket Wall/Trolley for 4.5Lt

Note: Brackets sold separately

SHARPS METAL SAFE

- Heavy duty steel casing with secure wall fixings
- Tamper evident and lock design
- Includes 2 x 2Lt sharps containers



CODE
50420

CONTAMINATED WASTE BAGS AND BIN

- For safe removal and disposal of hazardous material



CODE	DESCRIPTION
13400	Biohazard Bag L940 x W380mm
13350	Biohazard Bag L300 x W250mm
15115	Contaminated 20L Bin w/Sliding Lid

SYRINGE PICKER

- Easy and safe way of picking up contaminated syringes
- Ensure that pickup occurs at the cross member of the syringe



CODE
87843

HELPING HAND

- Ideal for safely picking up sharps or objects in hard to reach areas
- Available in 2 lengths



CODE	DESCRIPTION
44051	66cm
44052	81cm

PLASTIC GLOVE DISPENSERS

- Handles a wide variety of box designs to maximise convenience
- The single, double and triple units are all vertically mountable on either wall or counter



CODE	DESCRIPTION
852469	Single Box H133 x W264 x D95mm
852470	Double Box H260 x W264 x D95mm
852471	Triple Box H387 x W264 x D95mm



FIRST AID ROOM REQUIREMENTS

First aid requirements will vary from one workplace to the next, depending on the nature of the work, the type of hazards, the workplace size and location, as well as the number of people at the workplace. These factors must be taken into account when deciding what first aid arrangements need to be provided.

A first aid room should be established at the workplace if a risk assessment indicates that it would be difficult to administer appropriate first aid unless a first aid room is provided.

For example, workplaces where there is a higher risk of serious injury or illness occurring that would not only require immediate first aid, but also further treatment by an emergency service, may benefit from having access to a dedicated first aid room.

**ACCORDING TO THE LATEST NATIONAL CODE OF PRACTICE JULY 2012,
A FIRST AID ROOM IS RECOMMENDED FOR:**

**LOW RISK WORKPLACES WITH
200 WORKERS OR MORE**

**HIGH RISK WORKPLACES WITH
100 WORKERS OR MORE**

The contents of a first aid room should suit the hazards that are specific to the workplace.

The location and size of the room should allow easy access and movement of injured people who may need to be supported or moved by a stretcher or wheelchair.



TO ORDER THESE PRODUCTS VISIT WWW.ACCIDENTAL.COM.AU/FIRST-AID-ROOM

A FIRST AID ROOM SHOULD:

- ✓ Be located within easy access to a sink with hot and cold water (where this is not provided in the room) and toilet facilities
- ✓ Offer privacy via screening or a door
- ✓ Be easily accessible to emergency services (minimum door width of 1 metre for stretcher access)
- ✓ Be well lit and ventilated
- ✓ Have an appropriate floor area (14 square metres as a guide)
- ✓ Have an entrance that is clearly marked with first aid signage

source: First Aid in the Workplace Code of Practice 2012

FIRST AID ROOM CHECKLIST

KITS:		QTY
First Aid Kit		
First Aid Kit Wall Mounted		
First Aid Kit Portable		
EQUIPMENT:	QTY	QTY
86799 Dressing Trolley H750 x W750 x D450mm		86789 Dressing Trolley H750 x W450 x D350mm With Drawer
85550 Examination Couch		101230 Neck Brace/Collar Adjustable
85570 Step-Up Stool Double		86740 Digital Blood Pressure Monitor
85560 Step-Up Stool Single		86751 Sphygmomanometer Aneroid Wallet
100313 Privacy Screen With Wheels		101320 Infra Red Ear Thermometer
87561 Fluro Lamp - Magnifier		101321 Ear Thermometer Covers
87568 Fluro Lamp Desk Bracket		20441 Crutches
87562 Fluro Lamp Wall Bracket		35126 Splint 900 x 100mm Adjustable
87563 Mobile Lamp Base - 5 Wheels		86657 Wheelchair
BEDDING AND LINEN:	QTY	QTY
85100 Cellular Blanket		44260 Bedsheet Roll
85999 Sheet Disposable Flat Top Pk10		44924 Bedsheet Roll Dispenser
46750 Pillow Allergy Free		72708 Underpads 5-Ply Carton 300
37150 Pillow Case Plastic Single With Zipper		86005 Disposable Pillow Cases Pk10
STRETCHERS:	QTY	QTY
87200 Lightweight Folding Pole Stretcher		101265 Stretcher Basket
101263 Spineboard		101262 Stretcher Scoop
87200 Stretcher Aluminium		101426 Nylon Stretcher Restraints
RESUSCITATION AND DEFIBRILLATION:	QTY	QTY
83752 Manual Resuscitation Set		100114 Defibrillator Lifeline Semi Auto AED
37483 CPR Mask In Case		101473 Defibrillator Lifeline Auto AED
87094 Oxy-Resus System		101474 Defibrillator Lifeline View AED
INFECTION CONTROL AND SHARPS:	QTY	QTY
21776 Avagard Antiseptic Solution 500ml		89349 Viraclean Disinfectant Pump Pack 500ml
36226 Latex Gloves Large Box 100		36227 Latex Gloves XLarge Box 100
700448 Latex Gloves Nitrile Large Box 100		700449 Latex Gloves Nitrile XL Box 100
848836 Biohazard Clean Up Kit		873453 Absorbent Clean Up Powder 1kg
79804 Blood Spill Kit		873454 Absorbent Clean Up Powder 5kg
13400 Biohazard Yellow Bag		101336 Safety Glasses Clear
15115 Contaminated Waste Bin 20L		35226 Vomit Bag Pk50 Plastic Disposable
87843 Syringe Picker		37822 Sharps Container 1.4L
FIRST AID INSTRUMENTS:	QTY	QTY
36875 Stainless Steel Kidney Dish 25cm		873431 Emergency Torch
36750 Kidney Dish 16cm		6400 Penlight Examination Torch
37774 Universal Trauma Scissors Large		
FIRST AID POSTERS:	QTY	QTY
838850 Sign: Your First Aid Personnel are:		844187 First Aid For Burns Poster
841579 Sign: Emergency Phone Numbers		844189 First Aid For Eyes Poster
39505 CPR Wall Chart		844188 Workplace First Aid Guide Poster
FIRST AID SIGNS: (PLEASE TICK REQUIRED SIGN)		QTY
Sign:	<input type="checkbox"/> First Aid <input type="checkbox"/> First Aid Room	
Material:	<input type="checkbox"/> Poly <input type="checkbox"/> Metal <input type="checkbox"/> Self Stick Vinyl (250 x 180mm Only)	
Size:	<input type="checkbox"/> 600 x 450mm <input type="checkbox"/> 300 x 450mm <input type="checkbox"/> 300 x 225mm	

BEDDING, EQUIPMENT AND FURNITURE

BEDDING NEEDS

- Hygiene efficiency

CODE	DESCRIPTION
85100	Cellular Blanket (White Only)
37150	Pillow Case Plastic Single
46750	Pillow Allergy Free
85400	Day-Lee Pillow Sleeves 50 x 45cm
86005	Pillow Case Disposable Pk10
44260	Bedsheet Roll 56.5cm x 83.5m
44924	Bedsheet Roll Dispenser White
81600	Day-Lee Sheet 112 x 230mm
85999	Sheet Disposable Flat Top Pk10



ALL PURPOSE TOWELS

DAY CLINICAL TOWELS

- High absorption
- Non-sterile

SINGLE USE DRESSING TOWEL

- Sterile
- Hygienic

CODE	DESCRIPTION
65004	Day-Lee Towel 32 x 34cm Single
81610	Day-Lee Towel 32 x 34cm Pk100
21302	Dressing Towel Single



EXAMINATION COUCH AND STEPS

EXAMINATION COUCH

- 32mm welded tubular frame
- Adjustable head rest
- Comfortable vinyl covered foam padded top

L1820 x W610 x H769mm

STEP-UP STOOLS

- Robust steel frame
- Non-slip treads
- Single and double steps available

CODE	DESCRIPTION
85550	Examination Couch
85560	Step-Up Stool Single
85570	Step-Up Stool Double



FOLDABLE WHEELCHAIR

- Removable armrests
- Swing away and detachable leg rests
- Rubber wheels and 20cm front casters
- Weight 15kg
- Carrying capacity of up to 100kg

CODE
86657



MAGNIFYING EXAMINATION LAMP

- White powder coated finish
- Counter balanced arm for easy placement
- Choice of mounting options
- Replacement tubes available

CODE	DESCRIPTION
87561	Magnifying Lamp
87568	Desk Clamp Bracket For Magnifying Lamp
87562	Wall Bracket For Magnifying Lamp
87566	Replacement Tube For Magnifying Lamp
87563	Mobile Lamp Base – 5 Wheels



LIGHTWEIGHT PRIVACY SCREEN

- Tri-folding privacy screens
- Lightweight for easy mobility
- Assembly required

Open W2250 x H1790mm

Folded W750 x D440 x H1790mm

Curtain H1630mm

CODE
100313



DRESSING TROLLEYS

- All stainless steel construction
- Guard rails on 3 sides
- 75mm diameter castors
- Nylon drawer guides

Trolley
H750 x W750 x D450mm

Trolley with drawer
H750 x W450 x D350mm

CODE	DESCRIPTION
86799	Trolley
86789	Trolley w/ Drawer



DEFIBRILLATOR

- Lightweight, durable and easy to use
- Oversized, brightly lit "Power On" and "Shock" buttons
- Features clear step by step voice prompts and roomy, rubberised handle
- Flashing light indicators and text display to aid rescuer during use and show patient progress
- 7 year standby, 300 shocks, 16hr continuous operation*
- Daily, weekly and monthly automatic self tests
- 8 year warranty

VIEW AED

The Lifeline View AED is compact, portable and lightweight, featuring a full colour interactive display screen with instructional videos to assist the user during a rescue. This advanced AED has a built-in metronome, which conveniently counts out the beat for compression timing to guide the user. This highly rugged and durable design is also easily maintained with a status screen providing up to the minute maintenance information.

AUTO AED

When acting in the critical moment of someone suffering from cardiac arrest, the Lifeline Auto AED has a range of cutting edge treatment features. This user friendly defibrillator is designed for speed and simplicity, automatically evaluating heart rhythms and delivering a shock, eliminating the need for intervention.

SEMI AUTO AED

The Semi Automatic Lifeline AED combines user accessibility with advanced technological features. It has a simple two button interface and a brightly lit display, allowing ease of use for even non-medical personnel.

Semi and Auto AED packages come complete with a 7 year battery, carry case, pair of adult electrode pads, quick use card, user manual and rescue kit. The Rescue Kit includes a CPR micromask, eyeshield, two pairs of nitrile gloves, antiseptic wipes, towel, razor, scissors, and a biohazard bag. The View AED model comes with 4 year battery, pair of adult electrode pads and user manual.

Case for Semi and Auto AED



Display standard equipment signs as recommended in the First Aid Code of Practice, see **pages 46-47**.



Rescue Kit



Case for View AED

101473



101474

100114

CODE	DESCRIPTION
100114	Semi Auto AED 7 Year Battery Package
101473	Auto AED 7 Year Battery Package
101474	View AED
100115	AED 7 Year Replacement Battery Pack
100116	AED Adult Pads (For Semi And Auto Models)
100117	AED Complete Trainer Package

*7 year battery applies to the Semi and Auto models only.

DEFIBRILLATOR WALL BRACKET

- Wall mountable metal bracket allows easy access to the defibrillator
- Bracket comes with strap to secure unit in place
- Only available in black
- Compatible with Semi AED and Auto AED
- Lettering is 2.5cm high



H229 x W229 x D152mm

CODE
101475

DEFIBRILLATOR CABINET

- Outdoor protection for defibrillator unit
- White powder coated with clear front panel insert
- An alarmed cabinet is also available to ensure awareness of defibrillator usage
- Compatible with Semi AED and Auto AED
- Wall mountable cabinet



H457 x W457 x D102mm

CODE	DESCRIPTION
100359	Cabinet
100360	Cabinet With Alarm

ADJUSTABLE SPLINTS

- Compact and lightweight
- Retains shape and support
- Waterproof and reusable
- Adjusts to all sizes
- Can be cut according to application



CODE	DESCRIPTION
35126	Splint 900 x 100mm
35127	Finger Splint

AIR SPLINTS

- Australian made
- Extension tubes and click clamps
- Adult styles



CODE	DESCRIPTION
35125	Hand & Wrist
35075	Half Arm
35025	Full Arm
40022	Ankle
35100	Half Leg
35050	Full Leg

ADJUSTABLE CERVICAL COLLAR

- Four neck length settings
- Neck length setting positive lock
- Foam lined for wearer comfort



CODE
101230

RESUSCITATION

RESUSCITATION MASK & SHIELDS

- Easily conforms to facial contours
- See through face mask allows operator to observe casualty's mouth during resuscitation
- Special one way valve directs expired air away from operator
- Disposable resuscitation shield also available



871928

37483

CODE	DESCRIPTION
37483	Resus-Aid Mask/Oxygen Port
37490	Resus-Aid Mask Replacement Valve
871928	Resuscitation Shield Disposable

DISPOSABLE RESUSCITATORS

- Slip free textured surface for ease of handling in wet conditions
- Clear resuscitation bag allowing observation and cushion mask provides better seal
- Provides low inspiratory and expiratory resistance
- Built in expiratory diverter



CODE	DESCRIPTION
83756	Adult
83755	Child
83760	Infant

MANUAL RESUSCITATOR SET

- Meets the requirements of ISO-8382
- Autoclavable to 170°C
- 1500ml with pop off valve 60cm H2O
- Set includes: 2500ml oxygen reservoir, 2 adult masks, 2 guedel airways, carry case and an instruction manual



CODE
83752

OXYGEN RESUSCITATION EQUIPMENT

- Complies to AS 21488:1995
- TGA listed medical device
- Bag is easy to clean, durable, lightweight material with highly reflective tape
- Comfortable handles and shoulder strap for ease of carrying
- Sleeve for securing the medical oxygen bottle
- Designed as a first response kit for a professionally trained medical person
- Kit includes a carry bag, regulator, manual resuscitator, bodok seal, child and adult therapy mask and tubing, and adult resus mask



Do you require AED/CPR First Aid Training?
Book online today at www.accidental.com.au.
We can facilitate your First Aid Health & Safety Training nationwide.

CODE
87094

Note: Does not include oxygen bottle



MANUAL VACUUM PUMP

- Reusable hand powered suction pump provides sterile, hospital style suction
- Provides greater than 500mm Hg vacuum
- Connects to sterile disposables



CODE
37191

OXYGEN MASK & GUEDEL AIRWAYS

- Soft, transparent, odour free vinyl
- Aluminium fixer and elastic strip to ensure the best fit and user comfort



CODE	DESCRIPTION
37100	Mask Oxygen Therapy Adult
37099	Mask Oxygen Therapy Child
37106	Mask Oxygen Therapy Mask/Tubing Adult
37108	Mask Oxygen Therapy Mask/Tubing Child
37101	Oxygen Tubing 2 Metres
35171	Airway Guedel Disposable 50mm Blue
35172	Airway Guedel Disposable 60mm Black
35173	Airway Guedel Disposable 70mm White
35174	Airway Guedel Disposable 80mm Green
35175	Airway Guedel Disposable 90mm Yellow
35176	Airway Guedel Disposable 100mm Red

COMBINATION SHOWER AND EYE/FACE WASH - FOOT OPERATED

- **Complies with AS 4775-2007**
- Standards recommend 15 minutes continuous water during an emergency
- Maximum body coverage for faster decontamination
- Instant and effective treatment, providing fast cleansing
- Non clogging and self cleaning
- Designed and manufactured in Australia, constructed of stainless steel for durability
- Features individual spray head volume control, assuring proper spray pattern under varying water pressure
- 230 x 200mm aerated delivery area
- Shower flow rate 75Lt/min at 140Kpa
- Eye/face wash flow is 30Lt/min at 140Kpa
- Minimum recommended water supply for unit is 25mm IPS
- Requires 32mm (1.25" BSPM) standard 1650mm above floor level

CODE

100345



EYE & FACE SHOWER SYSTEM

- **Independently tested for compliance to ANSI Z358.1 and AS4775**
- Freestanding for stand-alone operation
- Stainless steel bowl, stay-open ball valve and hand actuator
- Integral volume adjustment control
- Push handle and foot activated eye/face wash with integral auto-open dust covers
- Eye/face wash features "Vertex Technology" where dedicated eyewash and independently angled face wash streams deliver optimum coverage
- Zero velocity apex point provides more comfort and control for effective cleansing of eyes
- Self-draining design reduces Legionella risk, particularly in tepid water applications
- Solid stainless, high visibility, low angle foot pedal and push handle for easy activation of eye/face wash
- Stainless steel construction provides superior durability and reliability
- Designed and manufactured in Australia

CODE

15527



EMERGENCY EYE/FACE WASH

- **Complies With AS4775-2007**
- Safe cleansing action for eyes and face
- Soft spray gently washes away contaminants
- Wall mounted and easily activated
- Regulated flow
- 300mm round stainless steel bowl
- "Soft spray" dual non-aerated
- Activated by a large stainless steel push flag handle

Valve Assembly: 15mm BSPF chrome plated brass, full port stay-open ball valve.

Water Supply: 15mm internal pipe size

Flow Rate: Balance control screw and 30L minute flow control, dust caps included

CODE

856472



GRAVITY FED PORTABLE EYEWASH STATION

- **Meets and exceeds the ANSI Z358.1 requirements for an emergency eyewash station**
- Water conditioner available to preserve water for up to 120 days
- Steady 15 minute waterflow
- 53 litres capacity



SCOOP STRETCHER

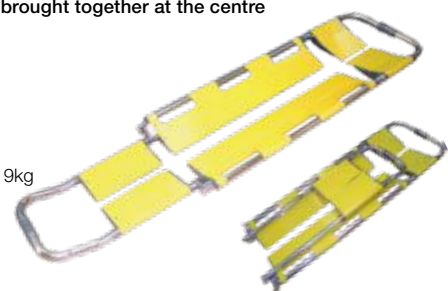
- Aluminium construction, hinged at both ends
- Restraint included
- Portable rigid first aid stretcher
- Can be split vertically into two halves, placed separately on either side of the patient, and then brought together at the centre

L1640 x W430 x H80mm 9kg

150kg load capacity

CODE

101262



CODE	DESCRIPTION
15526	Emergency Eye & Face Shower Pratt
15498	Hydrosep Water Conditioner Pk4

STRETCHERS

LIGHTWEIGHT POLE STRETCHER

- Sturdy, lightweight aluminium poles with contoured, flexible hand grips for easy handling
- Vinyl-coated nylon cover resists stains and mildew and is easy to clean
- Hinged at the centre to fold away for compact storage
- Suitable for first aid response, industrial sites and casualty rooms



Opened L2050 x W570 x H180mm

Folded L1020 x W180 x H90mm

Load capacity 150kg

CODE

87200



FLAT SPINE BOARD

- Lightweight and easy to clean
- Multiple handholds allow for ease of lifting and manoeuvring
- Compatible with basket stretcher below
- Used for the immobilisation and transportation of patients, when trauma to the spine is suspected

L1640 x W430 x H80mm 8kg

Load capacity 150kg

CODE DESCRIPTION

101263 FACPro Flat Spine Board

101426 Nylon Stretcher Restraints



BACKBOARD

- Tough, durable, lightweight and capable of keeping a body afloat
- X-Ray translucent
- Multiple handholds allow for ease of lifting and manoeuvring
- Use in cases of trauma where there is a possibility of spinal injury

L1750 x W450 x H50mm 7.5kg

Load capacity 150kg

CODE DESCRIPTION

101264 FACPro Backboard

101426 Nylon Stretcher Restraint



BASKET STRETCHER

- Designed to immobilise casualty, minimising further trauma
- Lightweight, portable and easy to clean
- Comes with restraints and bridle
- Splits into two sections for compact storage or backpacking
- Used where there are obstacles to movement or other hazards

L2170 x W430 x H90mm 20kg

Load capacity 150kg

CODE

101265



A spine board should be used to aid patient lifting in and out of Basket Stretchers.



IMMOBILISATION EXTRICATION DEVICE

- Provides immobilisation in the sitting position securing head, neck and torso in an anatomically neutral position reducing the possibility of additional injuries
- Colour coded body strap system
- Comes complete with two reusable plastic coated head/chin straps, neck pads and durable carry case
- This device allows the responder to remove the victim from the vehicle or other confined space

L2170 x W430 x H90mm 20kg

Load capacity 150kg

CODE

101266



CHOOSE THE CORRECT EXTINGUISHER

Choosing your fire extinguisher is easy with this Fire Extinguisher Guide. It is important to remember that fire extinguishers are for small fires only.

YES NO TYPE OF EXTINGUISHER Colour scheme - AS 1841.1 Pre 1997 Post 1997		A Wood, Paper & Plastic 	B Flammable & Combustible Liquids 	C Flammable Gases 	E Energised Electrical Equipment 	F Cooking Oils & Fats 	NOTES: *Limited indicates that the extinguishant is not the agent of choice for the class of fire, but that it will have limited extinguishing capability. Class D fires (involving combustible metals) use only special purpose extinguishers and seek expert advice. COMMENT: Refer Appendix A of AS 2444
							Special Powders are available specifically for various types of metal fires. Seek expert advice.
							Special Powders are available specifically for various types of metal fires. Seek expert advice.
							Generally not suitable for outdoor fires. Suitable only for small fires.
							Dangerous if used on flammable liquid, energised electrical equipment and cooking oil/fat fires.
							Dangerous if used on energised electrical equipment.
							Dangerous if used on energised electrical equipment.
							Check the characteristics of the specific extinguishant.
							Use blanket to wrap around a human torch. Ensure you replace the blanket with a new one after use.
							Ensure you maintain a path of egress between you and the nearest exit.

BE DRY CHEMICAL EXTINGUISHERS

- Certified to Australian Standards AS1841
- Powder coated mild steel cylinders
- Forged brass discharge valve
- Powder coated handle and trigger

ABE DRY CHEMICAL EXTINGUISHERS

- Certified to Australian Standards AS184
- Powder coated mild steel cylinders
- Forged brass discharge valve
- Powder coated handle and trigger
- 40% M.A.P. powder

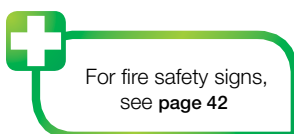


BE DRY CHEMICAL CODE	ABE DRY CHEMICAL CODE	DESCRIPTION	SUPPLIED WITH	APPLICATION
89000	89002	1kg	Heavy Duty Vehicle Bracket	Workshops, Vehicles, Boats, Garages
848502	848500	2kg	Hose And Wall Hook	Electrical Switchboards, Buses, Garages
848503	89004	4.5kg	Hose And Wall Hook	Mining Vehicles, Cargo Carriers, Light Industry
	861365	4.5kg	Hose And Wall Hook	Mines Approved
848504	848505	9kg	Hose And Wall Hook	Flammable Liquid, Road Tankers, Refineries, Service Stations, Manufacturing Plants
	89005			

Note: 1kg Extinguishers is used without a hose. Vehicle bracket can also be mounted to a wall.

WATER AND FOAM EXTINGUISHERS

- Certified to Australian Standards AS1841
- Powder coated stainless steel cylinders
- Forged brass discharge valve
- Powder coated handle and trigger
- Durable shock absorbing base
- Supplied with wall hook for mounting



CODE	DESCRIPTION
89012	Air/Water 9kg
89013	Foam 9kg



CO2 DRY CHEMICAL EXTINGUISHERS

- Certified to Australian Standards AS1841
- Powder coated aluminium cylinders
- Forged brass discharge valve
- Powder coated handle and trigger
- Fixed discharge horn on 2.0kg model
- Hose and horn on 3.5kg and 5.0kg models
- Supplied with wall hook for mounting

CODE	DESCRIPTION
850759	2kg
864450	3.5kg
864449	5kg



FIRE SAFETY EQUIPMENT

FIRE EXTINGUISHER CHART

- A quick and easy reference guide
- Ensure the right extinguisher is used in emergencies
- 225 x 400mm polypropylene



CODE

850211

Note: Artwork may change due to standards.

EMERGENCY WHISTLE & AIR HORN

- Attract attention in an emergency
- Air horn does not need to be replaced, recharge with air
- Air horn provides approximately 30 blasts per charge



83676

850342

CODE DESCRIPTION

850342 Rechargeable Air Horn 120db(A)

83676 Emergency Whistle w/ Clip Pk1

EMERGENCY SAFETY HAMMER

- Essential emergency escape tool
- Built in seat belt cutting blade and flashlight
- Special tip designed to break glass
- Comes complete with mounting bracket and batteries for flashlight



CODE

871167

FIRE BLANKETS

- Manufactured to comply to AS/NZS -3504:2001
- Woven glass fibre blanket
- Designed to be hung adjacent to potential fire source for easy deployment



CODE DESCRIPTION

844104 1000 x 1000mm

35775 1200 x 1800mm

35800 1800 x 1800mm

MEGAPHONE

- Ideal for fire or emergency evacuation
- Comes with a push button, volume control incorporated in the handle and a siren
- 20 watt power



CODE

852516*

* No Batteries are included: 6 x C Cell Batteries are required to operate Megaphones

EMERGENCY TORCH

- Features 3 LED lights
- Compact torch ideal for remote area
- 1 minute crank will provide up to 40 minutes of light
- No batteries required



L150 x W50 x D30mm

CODE

873431

ROTARY FIRE ALARM BELL

- Robust, hand operated fire bell
- Reliable, independent fire alarm warning indoors and out
- Supplied with pre drilled flange for easy installation
- Sound output: 60db(a) at up to 35 metres
- Constructed from a red powder coated aluminium dome and base plate



H280 x W229mm

CODE

872701

HOSE REEL

- Sturdy steel construction
- Ideal in emergency situations
- Reel is designed to help fight fires in your workplace
- Has a guide arm and a locking nozzle device
- Hose measures 19mm x 36m



CODE

858025

Note: Artwork may change due to standards.

HARD HAT LABELS

- Make fire wardens visible
- 56mm diameter
- Vinyl labels



845737



845734



845735



845736



845738



845739



Emergency plans and safety equipment are necessary in the control of risk. In relation to hazardous chemicals workplaces need to be equipped with fire protection and fire fighting equipment that is compatible with the chemicals that are being stored, generated and handled at the workplace.

Source – Compendium of Workers Compensation Statistics Australia 2006-07.

FIRE EQUIPMENT & EMERGENCY SIGNS

						
450x600 MTL 834061 450x600 POLY 841130 300x450 MTL 834060 300x450 POLY 834967 250x350 LUM ^(SS) 833472 225x300 MTL 841132 225x300 POLY 841131 180x250 SS 838594	450x600 MTL 843019 450x600 POLY 843018 300x450 MTL 835975 300x450 POLY 834966 250x350 LUM ^(SS) 841055 225x300 MTL 843021 225x300 POLY 843020 180x250 SS 841054	450x600 MTL 841067 450x600 POLY 841066 300x450 MTL 835970 300x450 POLY 834968 250x350 LUM ^(SS) 833473 225x300 MTL 841069 225x300 POLY 841068 180x250 SS 838651	300x450 MTL 835971 300x450 POLY 834969 250x350 LUM ^(SS) 833474 225x300 MTL 841048 225x300 POLY 841047 180x250 SS 838652	450x600 MTL 841050 450x600 POLY 844770 300x450 MTL 835973 300x450 POLY 834964 250x350 LUM ^(SS) 833479 225x300 MTL 843017 225x300 POLY 841051 180x250 SS 841053	450x600 MTL 834065 450x600 POLY 841042 300x450 MTL 834064 300x450 POLY 834970 250x350 LUM ^(SS) 833475 225x300 MTL 841044 225x300 POLY 841043 180x250 SS 838593	450x600 MTL 832197 450x600 POLY 841056 300x450 MTL 832196 300x450 POLY 834973 250x350 LUM ^(SS) 73532 225x300 MTL 841058 225x300 POLY 841057 180x250 SS 841059
						
450x600 MTL 841126 450x600 POLY 841125 300x450 MTL 835974 300x450 POLY 834965 250x350 LUM ^(SS) 833480 225x300 MTL 841128 225x300 POLY 841127 180x250 SS 841129	450x600 MTL 832199 450x600 POLY 841063 300x450 MTL 832198 300x450 POLY 834971 250x350 LUM ^(SS) 833476 225x300 MTL 841065 225x300 POLY 841064 180x250 SS 838653	450x600 MTL 841095 450x600 POLY 841094 300x450 MTL 835976 300x450 POLY 834974 250x350 LUM ^(SS) 833481 225x300 MTL 841097 225x300 POLY 841096 180x250 SS 841098	450x600 MTL 834067 450x600 POLY 841060 300x450 MTL 834066 300x450 POLY 834972 250x350 LUM ^(SS) 833477 225x300 MTL 841062 225x300 POLY 841061 180x250 SS 838654	450x600 MTL 861096 450x600 POLY 861095 300x450 MTL 861098 300x450 POLY 861097 250x350 LUM ^(SS) 861094 225x300 MTL 861100 225x300 POLY 861099 180x250 SS 861101	450x600 MTL 835972 450x600 POLY 841000 300x450 MTL 841001 300x450 POLY 834963 250x350 LUM ^(SS) 833478 225x300 MTL 841003 225x300 POLY 841002 180x250 SS 841004	450x600 MTL 841071 450x600 POLY 841070 300x450 MTL 841073 300x450 POLY 841072 250x350 LUM ^(SS) 841077 225x300 MTL 841075 225x300 POLY 841074 180x250 SS 841076
						
200 Dia POLY 832899 200 Dia SS 836731	200 Dia POLY 832897 200 Dia SS 836734	200 Dia POLY 832801 200 Dia SS 836732	200 Dia POLY 840972 200 Dia SS 840973	200 Dia POLY 832898 200 Dia SS 836733	200 Dia POLY 832959 200 Dia SS 836736	
						
350x180 LUM ^(M) 835836 350x180 LUM ^(SS) 833393 350x180 POLY 832736	450x180 LUM ^(M) 835841 450x180 LUM ^(SS) 833398 450x180 POLY 841150	450x180 LUM ^(M) 835855 450x180 LUM ^(SS) 833420 450x180 POLY 841149	450x180 LUM ^(M) 844386 450x180 LUM ^(SS) 844388 450x180 MTL 850942 450x180 POLY 844387	350x180 LUM ^(M) 835851 350x180 LUM ^(SS) 834730 350x180 POLY 832720	450x180 LUM ^(M) 835854 450x180 LUM ^(SS) 833419 450x180 POLY 841146	
						
450x180 LUM ^(SS) 851513 450x180 LUM ^(M) 853697 450x180 LUM ^(P) 854623 450x180 MTL 853724 450x180 POLY 854765 300x125 LUM ^(SS) 859118 50x100 LUM ^(SS) 851413	450x180 LUM ^(SS) 851518 450x180 LUM ^(M) 859119 450x180 LUM ^(P) 854622 450x180 MTL 856838 450x180 POLY 859120 300x125 LUM ^(SS) 859121 50x100 LUM ^(SS) 851408	450x180 LUM ^(SS) 851517 450x180 LUM ^(M) 859122 450x180 LUM ^(P) 854624 450x180 MTL 859124 450x180 POLY 854766 300x125 LUM ^(SS) 859123 50x100 LUM ^(SS) 851409	450x180 LUM ^(SS) 851514 450x180 LUM ^(M) 853363 450x180 LUM ^(P) 854621 450x180 MTL 859116 450x180 POLY 859115 300x125 LUM ^(SS) 859117 50x100 LUM ^(SS) 851412	450x180 LUM ^(SS) 851515 450x180 LUM ^(M) 853362 450x180 LUM ^(P) 855427 450x180 MTL 859114 450x180 POLY 854764 300x125 LUM ^(SS) 859648 50x100 LUM ^(SS) 851411	450x180 LUM ^(SS) 853361 450x180 LUM ^(M) 853722 450x180 LUM ^(P) 851516 450x180 MTL 853723 450x180 POLY 854767 300x125 LUM ^(SS) 859113 50x100 LUM ^(SS) 851410	

*(SS)Self-stick Polyester, (M)Coloured Bond Steel, (P)Polypropylene

FIRE EXTINGUISHER TAGS

- Ideal to keep track of fire extinguisher inspection and maintenance

W75 x H145mm

CODE	DESCRIPTION
76222	Inspection Tags Pk25
65371	Maintenance Tags Pk25

(front)

76222

(back)

(front)

65371

(back)

SUNSCREEN

PRO BLOC SPF 30+ SUNSCREEN WITH VITAMIN E

- Complies with Australian Standard AS/NZS 2604:1998
- SPF 30+ with moisturising vitamin E
- 3 hours water resistant
- Pump pack bottle
- Non-greasy



CODE	DESCRIPTION
100333	Lip Balm 12g
100015	Sunscreen 125ml Tube
100016	Sunscreen 250ml Bottle
100017	Sunscreen 500ml Pump Pack
100018	Sunscreen 1L Pump Pack
100019	Wall Bracket Suit 500ml
100020	Wall Bracket Suit 1L

Note. Brackets and sunscreens sold separately.

ULTRA PROTECT SPF 30+ SUNSCREEN WITH INSECT REPELLANT

- Complies with Australian Standard AS/NZS 2604:1998
- Broad spectrum
- Non-greasy
- Contains vitamin E



CODE	DESCRIPTION
91097	1L Pump
91096	125ml Bottle

HAMILTON SPF 30+ MILK SUNSCREEN

- Complies with Australian Standard AS/NZS 2604:1998
- Maintain SPF 30+ even after 4 hours immersion in water
- Broad spectrum absorbing UVA, UVB and UVC radiation
- Can be used all over the body



CODE	DESCRIPTION
61720	Pump 500ml
61710	125ml
61725	Solastick 30+ Small 5gm

ULTRA PROTECT® SPF50+ SUNSCREEN

- Broad spectrum protection with additional UVA filters
- Protects against UVA both short and long wave and UVB radiation
- Increased sun protection factor
- 4 hour water resistant
- Greater than SPF60 with UVB radiation protection
- Low irritant, fragrance free
- Dry touch non stick formula
- Also contains vitamin E and aloe vera for moisturising and conditioning the skin
- Rubs in clear



CODE	DESCRIPTION
874927	Roll On 50+ 50g
874926	Lip Balm 50+ 12g
874925	Sachet 50+ 10ml

WHITE ZINC CREAM

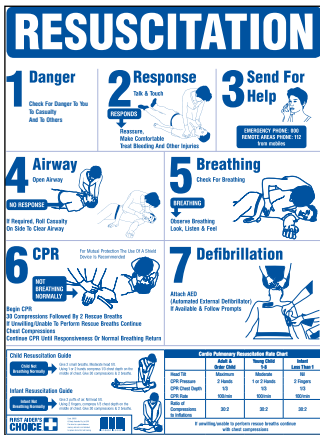
- Complies with Australian Standard AS/NZS 2604:1998
- Broad spectrum SPF 30+
- 4 hour water resistant
- Protection against sunburn
- Provides soothing relief for dry skin, rashes and irritations
- Ideal for cold sores, dry cracked lips and chafed or windburned skin



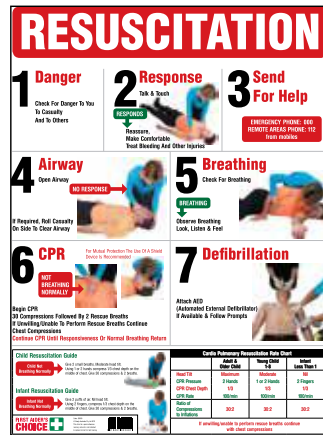
CODE
09900

WORKPLACE SAFETY POSTERS

These posters are laminated for extra durability and have easy to follow instructions. Display in prominent positions around your workplace to provide adequate instruction in the event of a workplace emergency or accident, and to promote health and safety workplace practices.



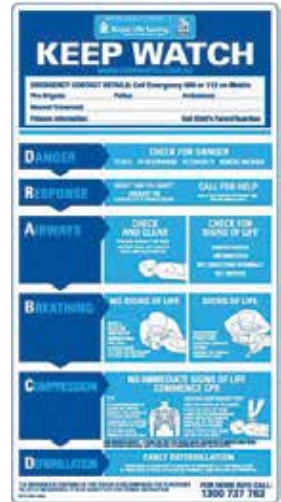
420x590 Poly 844766



450x600 Poly 855383



420x590 Laminated 844395



Child CPR – Indoor

420x770 Poly 852061



590x420 Laminated 844187



830x580 Laminated 844188



590x420 Laminated 844189



590x420 Laminated 851919



590x420 Laminated 851920



590x420 Laminated 851924



590x420 Laminated 851923



590x420 Laminated 844393



420x770 Poly 852062



Pool CPR – Outdoor

420x770 Poly 852060

EMERGENCY INFORMATION SIGNS



225x300 MTL **872718**
225x300 POLY **872719**



300x450 MTL **841539**
300x450 POLY **835697**



450x600 MTL **832190**
450x600 POLY **835321**
300x450 MTL **832193**
300x450 POLY **835322**
225x300 MTL **841538**
225x300 POLY **841537**
180x250 SS **838677**



450x600 MTL **832188**
450x600 POLY **835324**
300x450 MTL **832189**
300x450 POLY **835325**
225x300 MTL **842767**
225x300 POLY **842626**
180x250 SS **836780**



450x600 MTL **861160**
450x600 POLY **861161**
300x450 MTL **841536**
300x450 POLY **835328**
225x300 MTL **861159**
225x300 POLY **843572**
180x250 SS **843061**



450x600 MTL **843185**
300x450 MTL **832381**
300x450 POLY **835340**
225x300 MTL **843186**
250x180 SS **843009**



450x600 MTL **835330**
450x600 POLY **832185**
300x450 MTL **836574**
300x450 POLY **835331**
225x300 MTL **840045**
225x300 POLY **840044**
180x250 SS **838903**



600x900 MTL **844903**
450x600 FLT **831168**
450x600 MTL **832439**
450x600 POLY **840000**
450x600 SAP **845693**
300x450 MTL **840002**
300x450 POLY **840001**
300x450 SAP **845692**
300x225 SAP **845691**
225x300 MTL **840004**
225x300 POLY **840003**
180x250 SS **842637**
90x125 SS **840005**



Displaying well-recognised, standardised first aid signs will assist in easily locating first aid equipment and facilities. Further information on the design and use of signs is available in AS 1319 - Safety Signs for the Occupational Environment.



300x450 MTL **832687**



300x450 POLY **838855**



450x600 POLY **835395**
300x450 POLY **835396**



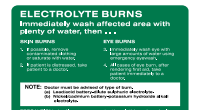
450x600 MTL **845506**
450x600 POLY **861176**
300x450 MTL **835329**
300x450 POLY **842702**
225x300 MTL **842696**
225x300 POLY **842623**
180x250 SS **833224**
90x125 SS **848100**



450x300 MTL **855757**
450x300 POLY **841579**



450x300 MTL **832434**
450x300 POLY **841289**
250x180 SS **838611**



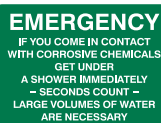
600x450 MTL **843362**
600x450 POLY **843363**
450x300 MTL **832202**
450x300 POLY **835334**



600x450 FLT **853535**
600x450 MTL **832491**
600x450 POLY **835365**



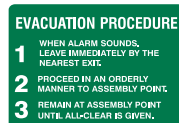
600x450 MTL **832660**
600x450 POLY **835660**



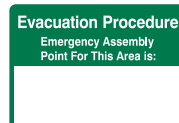
600x450 MTL **851806**
600x450 POLY **861171**
450x300 MTL **841286**
450x300 POLY **835143**
300x225 MTL **844455**
300x225 POLY **843661**
250x180 SS **841287**



900x600 MTL **844906**
600x450 MTL **832379**
600x450 POLY **835326**
600x450 SAP **845696**
450x300 MTL **841541**
450x300 POLY **841540**
450x300 SAP **845695**
300x225 MTL **842760**
300x225 POLY **842707**
300x225 SAP **845694**
250x180 SS **843182**



450x300 MTL **841530**
450x300 POLY **835335**



450x300 POLY **838860**
300x225 MTL **843292**
250x180 SS **843344**



600x450 MTL **844467**
600x450 POLY **844319**
450x300 MTL **841531**
450x300 POLY **844833**
300x225 MTL **842779**
300x225 POLY **842631**
250x180 SS **833025**



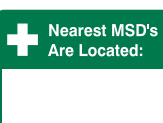
600x450 MTL **844575**
600x450 POLY **842716**
450x300 MTL **841590**
450x300 POLY **841589**
300x225 MTL **842663**
300x225 POLY **842698**
250x180 SS **842647**



600x450 MTL **841312**
600x450 POLY **841311**
450x300 MTL **841313**
450x300 POLY **835180**
300x225 MTL **841315**
300x225 POLY **841314**
250x180 SS **838628**



600x450 MTL **852622**
600x450 POLY **852621**



450x300 MTL **841591**
250x180 SS **838687**



450x300 MTL **838858**
450x300 POLY **844515**
250x180 SS **838870**



600x450 MTL **841581**
600x450 POLY **841580**
450x300 MTL **841583**
450x300 POLY **841582**
300x225 MTL **841585**
300x225 POLY **841584**
250x180 SS **841586**



600x450 MTL **844493**
600x450 POLY **843798**
450x300 MTL **832693**
450x300 POLY **844843**
300x225 MTL **843736**
300x225 POLY **842625**
250x180 SS **832971**



450x600 MTL **843343**
450x600 POLY **844808**
450x300 MTL **832391**
225x300 MTL **842795**
225x300 POLY **842624**
250x180 SS **833226**



600x450 MTL **841317**
600x450 POLY **841316**
450x300 MTL **841318**
450x300 POLY **835180**
300x225 MTL **841320**
300x225 POLY **841319**
250x180 SS **838622**



600x450 MTL **848921**
600x450 POLY **844081**
450x300 MTL **841575**
450x300 POLY **835067**
300x225 MTL **842678**
300x225 POLY **856842**
250x180 SS **844283**



600x450 MTL **861170**
600x450 POLY **844686**
450x300 MTL **844685**
450x300 POLY **844684**
300x225 MTL **844683**
300x225 POLY **844682**
250x180 SS **844681**



450x300 MTL **844846**
450x300 POLY **838850**
250x180 SS **843345**



450x300 MTL **841545**
250x180 SS **841546**



450x300 MTL **834785**
250x180 SS **841547**

EMERGENCY INFORMATION SIGNS



600x450 POLY 842634
450x300 POLY 842635



450x300 POLY 841578
450x300 MTL 832511



450x300 MTL 832683
450x300 POLY 841577



450x300 MTL 841570
250x180 SS 832869



1200x600 MTL 832716
600x300 MTL 832731



300x125 POLY 841594
300x125 SS 841595



450x180 MTL 844215
450x180 POLY 843229
300x125 POLY 841592
300x125 SS 841593



300x125 POLY 841571
300x125 SS 841572



300x125 POLY 841568
300x125 SS 841569



300x125 POLY 841566
300x125 SS 841567



450x180 MTL 843095
450x180 POLY 840091
300x125 POLY 841532
300x125 SS 841533



300x125 POLY 841573
300x125 SS 841574



300x125 POLY 841587
300x125 SS 841588



450x180 POLY 834635
450x180 MTL 832376



300x125 POLY 841596
300x125 SS 841597



450x180 POLY 834634
450x180 MTL 832375



450x180 POLY 835333
450x180 MTL 832390



450x180 MTL 852475
450x180 POLY 852474
125x90 SS 852473



225x225 POLY 873488



225x225 POLY 841565



225x225 POLY 835315



225x225 POLY 835219



225x225 POLY 835316



225x225 POLY 838782



600x900 MTL 844207



600x900 MTL 844206



600x900 MTL 844204



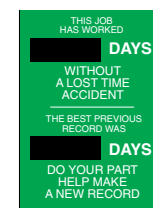
600x900 MTL 844205



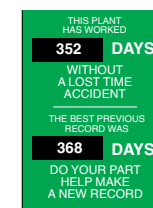
600x900 MTL 844211



600x900 MTL 844210



600x900 MTL 844208



600x900 MTL 844209

MAGNETIC NUMBER KITS FOR USE ON METAL BOARDS

- Magnetic numerals for use on Metal Safety Record Boards shown above
- Each kit contains 30 numbers, 3 each of 0 through to 9

CODE	CODE	CODE	DESCRIPTION
WHITE ON GREEN	GREEN ON WHITE	WHITE ON BLACK	
832604	832607	844329	53mm
832605	832608	-	38mm
832606	832610	-	20mm

*White on black numbers, 53mm size only.

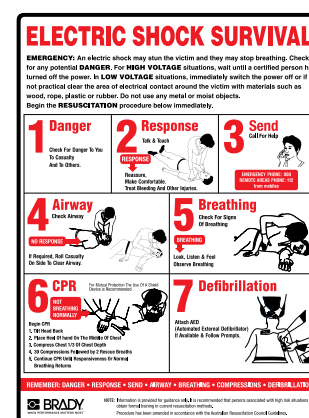


ELECTRICAL SHOCK SURVIVAL SIGN

- Display in areas where your employees can effectively use it in the event of an emergency
- Reflective signage is suitable for dark areas such as mines
- Manufactured to comply with Australian Resuscitation Council Guidelines

CODE	DESCRIPTION
833590	Poly 450 x 600
835989	MTL 450 x 600
851258	C1 Ref. MTL 450 x 600
851259	C2 Ref. MTL 450 x 600
851738	MTL 600 x 900

* It is recommended that this sign is used in conjunction with a formal first aid training course.



CUSTOM SAFETY SIGNS MADE TO ORDER

1. CHOOSE MATERIAL AND SIZE (TICK APPROPRIATE MATERIAL AND SIZE BELOW ☒) NOTE: ONE SIGN PER FORM

FORMAT	SIZE	MATERIAL
<input type="checkbox"/> Landscape	<input type="checkbox"/> 90 x 125mm	<input type="checkbox"/> Metal
<input type="checkbox"/> Portrait	<input type="checkbox"/> 180 x 250mm	<input type="checkbox"/> Poly
<input type="checkbox"/> Horizontal	<input type="checkbox"/> 180 x 450mm	<input type="checkbox"/> Self-Adhesive Poly
	<input type="checkbox"/> 225 x 300mm	<input type="checkbox"/> Self-Adhesive Vinyl
	<input type="checkbox"/> 270 x 270mm*	<input type="checkbox"/> Aluminium
	<input type="checkbox"/> 250 x 350mm	
	<input type="checkbox"/> 300 x 300mm*	
	<input type="checkbox"/> 300 x 450mm	

* Only sizes available in square format.

2. CHOOSE COLOUR AND LAYOUT (TICK ONE OF THE OPTIONS BELOW ☒)

PORTRAIT FORMATS:

☐

☐

☐

☐

☐

☐

☐

☐

☐

LANDSCAPE FORMATS:

☐

☐

☐

☐

☐

HORIZONTAL FORMATS:

☐

☐

☐

☐

☐

☐

3. SPECIFY LEGEND TEXT

Please print clearly – capital letters only, with no more than 100 characters.

- ☐ Arrange text best way to fit
☐ Arrange text exactly as specified above

4. PICTOGRAM

Specify part number of picto sited in catalogue or please sketch your symbol below and indicate placement in tick boxes. Visit website for more picto's.

SKETCH OF PICTO:

- ☐ Insert this symbol **INSIDE OF** the header shape chosen in #2. (above)
☐ Insert this symbol **IN PLACE OF** the entire header shape chosen in #2. (above)
☐ Insert this symbol elsewhere on the sign as specified in #3. (left)
☐ No Picto... use only the symbolic shape exactly as shown in #2. (above)

5. QUANTITY

No minimum order. Please call for quote and delivery.

6. LOGO (ARTWORK ATTACHED)

- ☐ Yes* ☐ No (Not Required)

*ALL artwork must be supplied as a digital image in either jpeg, eps or tiff format. Minimum 300dpi resolution.

7. OPTIONS

- ☐ C1 Reflective (Not available in Self-Adhesive Vinyl)
☐ C2 Reflective (Not available in Self-Adhesive Vinyl)
☐ BradyGlo Luminous (Not available in Aluminium)
☐ Overlamine (UltraTuff) (Not available in Self-Adhesive Vinyl)

8. CONTACT DETAILS

CUSTOMER BILLING LOCATION:			CUSTOMER SHIPPING LOCATION:		
Company Name:			Name/Title:		
ABN:			Company Name:		
Address:			Address:		
City:	State:	Post Code:	City:	State:	Post Code:
Purchase Order No.:			Attn:		
Contact Name:			Phone:		FAX:
Phone:		FAX:	Email:		

FAX THIS FORM TO 1300 882 122

DESCRIPTION	PAGE
2nd Skin Dressing Kit	19
4WD First Aid Kit	15
ABE Extinguisher	41
Absorbent Clean-Up Powder	27
Adhesive Tape	22-23
Adjustable Cervical Collar	37
Adjustable Splints	37
AED	37
Air Horn Rechargeable	42
Air Splints	37
Alcohol Wipes	25
All Purpose First Aid Kit	14
All Purpose Kit Top Up Pack	14
All Purpose Towels	36
Amputated Parts Module	29
Anti-Inflammatory Gel	28
Antibacterial Hand Gel	27
Antiseptic Wipes	25
Antiseptics	25
Aspirin	28
Aspro Clear	28
Avagard Antiseptic Solution	27
Backpack First Aid Kit	15
Backboard	40
Bactericidal Wipe	27
Bacterial Wipes	27
Bag Soft Pack Empty	31
Bandage Clips	21, 32
Bandage Tubular	21
Bandages	21
Basket Stretcher	40
BE Fire Extinguishers	41
Bedding Needs	36
Betadine Antiseptic	25
Biohazard Bag	33
Biohazard Kit	27
Bites And Stings Kit	17
Bites Relief	26
Blanket Thermal	29
Blood Pressure Monitor	32
Blood Spill Clean-Up Kit	27
Blue Detectable Strips	19
Blue Nitrile Gloves	28
Blue Tape	21-22
Boating First Aid Kit	13
Bruise Cream	28
Burnaid Gel	26
Burnaid Pads	26
Burns Dressing	20, 26
Burns First Aid Kit	16
Burns Relief	26
Burns Risk Module	11
Burns Treatment Card	30
Butterfly Strips	19
Café First Aid Kit	12
Calcium Gluconate Gel	26
Case Empty	31
Catering First Aid Kit	12
Celluvic Eye Drops	24
Cetrimide	25
Chart CPR	45
Chart Fire Extinguisher	42
Childcare/Schools First Aid Kit	13
Chlorhexidine	25
Clean-Up Absorbent Powder	27
Cloth Bandage	21
CO2 Dry Chemical Extinguisher	41
Code Of Practice Kits	10
Cohesive Bandage	21
Cold Pack	23
Combine Dressing	20
Conforming Bandage	21
Construction First Aid Kit	12
Contaminated Waste Bin	33
Cool-It Spray	23
Cotton Balls	21
Cotton Buds/Tips	21
Cotton Squares	21
CPR Pocket Card	30
CPR Poster	45
Crepe Bandage	21
Crutches	32
Custom First Aid Kits	17
Custom Sign Order Form	48
Deep Heat	28
Defibrillator	37
Defibrillator Cabinet	37
Defibrillator Wall Bracket	37
Deluxe Personal First Aid Kit	14
Dencorub	28
Detectable Blue Dressings	19
Detectable Strips	19
Dettol Antiseptic Liquid	25

DESCRIPTION	PAGE
Digital Thermometer	32
Disinfectant	27
Disinfectant Wipes	27
Disposable Bandage	21
Disposable Forceps	29
Disposable Gloves	28
Disposable Resuscitation Shield	29, 38
Disposable Resuscitators	38
Dressing Kit	19
Dressing Pack	20
Dressing Strip	18-19
Dressing Towel	36
Dressing Trolley	36
Dressings	18-20
Dry Chemical Extinguisher	41
Ear Thermometer	32
Elastic Tape	22
Electrical Contractors First Aid Kit	12
Electrical Shock Survival Sign	47
Emergency Burns Station	16
Emergency Eye Shower Bottle	24
Emergency Eye Wash Kit	16
Emergency Eye Wash Station	39
Emergency Hammer	42
Emergency Signs	43
Emergency Whistle	42
Examination Couch	36
Examination Lamp	36
Examination Torch	32
Exit Signs	43
Eye And Face Shower	39
Eye Bath	29, 33
Eye Care	24
Eye Drops	24
Eye Injury Module	11
Eye Irrigation	24
Eye Pads	24
Eye Wash Packs	24
Eye Wash Station	39
Eye/Face Wash	39
Fabric Strips	18-19
Film Dressing	19
Finger Cots	18
Finger Stalls	18
Fingertip Strips	18-19
Fire Alarm Bell	42
Fire Blanket	42
Fire Extinguisher Guide	41
Fire Extinguisher Tags	43
Fire Extinguishers	41
Fire Safety	41-43
Fire Signs	43
First Aid Bags	31
First Aid Booklet	30
First Aid Cabinets	31
First Aid Carry Cases	31
First Aid Identification	30
First Aid Injury Specific Add On	11
First Aid Instruments	29
First Aid Kit Refills	9-11
First Aid Kit Stickers	30
First Aid Kits	8-17
First Aid Manual	30
First Aid Modules	11
First Aid Reporting	30
First Aid Room Equipment	36
First Aid Room Fit Out	34-35
First Aid Posters	45
First Aid Signs	45-48
First Aid Supplies	18-30
First Response Run Kit	12
Flat Glass Thermometer	32
Flat Spine Board	40
Foam Extinguisher	41
Foldable Wheelchair	36
Folding Stretcher	40
Food Preparation First Aid Kit	12
Food Preparation Module	11
Foot Powder	26
Forceps	29
Four Wheel Drive First Aid Kit	15
Gallipot	29, 33
Gauze	21
Gauze Dressing	19
Gauze Swabs	21
General Boating First Aid Kit	13
General Purpose First Aid Kits	14
General Purpose Tape	22
Glove Dispenser	33
Gloves	28
Guedel Airways Disposable	38
Hand Cleaners	27
Hand Sanitiser	27

DESCRIPTION	PAGE
Handy Personal Kit	14
Hard Hat Emblems	30
Hard Hat Labels	42
Healaid Cream	25
Heat Gels	28
Heat Rub	28
Heat Packs	23
Helping Hand	33
Herron Paracetamol	28
Hirudoid Cream	28
Hose Reel	42
Hot/Cold Packs	23
Hypoallergenic Tape	22
Immobilisation Extraction Device	40
Industry First Aid Kits	12-13
Infection Control	27
Injury First Aid Kits	16-17
Injuries Register	30
Injury Specific First Aid Packs	11
Insect And Snake Bite Kit	17
Instant Heat Pack	23
Iodine Wipes	25
Island Dressing	19
Itch Relief Cream	26
Key Ring Resuscitation Kit	17
Kidney Dish	29, 33
Kit Cases Custom	17, 31
Knuckle Strips	18-19
Latex Gloves	28
Lightweight Pole Stretcher	40
Magnetic Number Kits	47
Magnifier Plastic	24
Magnifier Headband	32
Magnifying Examination Lamp	36
Magnifying Lamp Accessories	36
Magnoplasm Paste	28
Manual For First Aid	30
Manual Resuscitator Set	38
Marine First Aid Kit	13
Medicine Measure	29, 33
Megaphone	42
Metsal Heat Rub	28
Mini Sharps Container	29
Multi-Trauma Dressing	20
Mylanta	28
National Workplace Kits	8-9
Neck Brace	37
Nitrile Gloves	28
Non-Adherent Dressing	20
Nurofen	28
Optrex Eye Wash	24
Outdoor First Aid Kit	14-15
Outdoor Module	11
Oxygen Mask	38
Oxygen Resuscitation Equipment	38
Pain Relief	28
Panadol	28
Paper Tape	22
Paracetamol	28
Paraffin Gauze Dressing	19
Paramedic Pouch	31
Paramedic Pouch Kit	32
Personal First Aid Kits	14-15
Personal Kit Top Up Pack	14
Pharmacy Products	28
Plastic Detectable Strips	19
Plastic Instruments	29
Plastic Magnifier	24
Plastic Sheet	20
Plastic Strips	18-19
Plastic Ware	29, 33
Polypropylene Portable Case	31
Portable Eye Wash Station	39
Portable First Aid Bag	31
Portable First Aid Kits	8-17
Povidone Iodine Spray	25
Povidone Iodine Wipes	25
Premium Fabric Strips	18
Premium Plastic Strips	18-19
Privacy Screen	36
Rapaid Antiseptic	25
Rapaid Itch Relief Cream	26
Rapaid Rash Relief	26
Rash Relief Powder	26
Refills First Aid Kits	9-11
Refresh Eye Drops	24
Register Of Injuries	30
Remote First Aid Kit	13
Remote Module	11
Rescue	37-40
Rescue Blanket	29
Resuscitation Key Ring Kit	17
Resuscitation Mask	38

DESCRIPTION	PAGE
Resuscitation Poster	45
Resuscitation Shield Disposable	29, 38
Retention Tape	22
Reusable Hot/Cold Pack	23
Safety Pins	21, 32
Safety Posters	45
Scissors	29
Scoop Stretcher	39
Screen	36
Security Belt First Aid Kit	17
Sharps Clean-up Kit	17
Sharps Containers	29, 33
Sharps Metal Safe	33
Sheer Plastic Strips	18
Signs	45-48
Signs Custom Order Form	48
Snake And Insect Bite Kit	17
Snake Bite Kit	17
Snake Bite Treatment Card	30
Soft Pack First Aid Kits	8, 12-16
Specialised Creams	28
Spenco 2nd Skin Dressing Kit	19
Sphygmomanometer	32
Spill Clean-Up Powder	27
Spine Board	40
Splinter Probes Disposable	29, 32
Splints	37
Sports Tape	23
Sports/Trainers First Aid Kit	13
Sprains And Strains Module	11
Spray Bandage	18
Stainless Steel Instruments	29
Stainless Steel Ware	33
Step-Up Stools	36
Sterile Eye Irrigation	24
Sterile Gauze Pieces	21
Sterile Plastic Sheets	20
Sticker CPR	30
Sticker Hard Hat	30
Stingose	26
Stings And Bites Kit	17
Stings Relief	26
Stop Itch Cream	26
Strapping Tape	23
Stretchers	39-40
Sun Protection	44
Sunscreen	44
Syringe Picker	33
Tape Strapping	23
Tapes	22-23
Thermal Rescue Blanket	29
Thermometers	32
Torch	42
Torch Examination	32
Trailies Work Vehicle Kit	15
Trauma First Aid Kit	16
Trauma Module	11
Trauma Scissors	29
Travel First Aid Kit	14
Treatment Cards	30
Treatment Posters	45
Triangular Bandage	21
Trolley	36
Tubular Bandage	21
Tweezers	29, 32
Universal Dressing	20
Vacuum Pump Manual	38
Vehicle First Aid Kit	15
Vehicle First Aid Kits	14-15
Viraclean Disinfectant	27
Voltaren Emugel	28
Vomit Bag	27
Vomit Clean-Up	27
Wall Mountable First Aid Cabinet	31
Water Extinguisher	41
Waterproof Carry Case	31
Waterproof Dressing	19
Waterproof Tape	22
Wheel Chair	36
Whistle Emergency	42
Wipes	21
Work Vehicle First Aid Kit	15
Workplace Safety Posters	45
Workplace Safety Signs	45-48
Workplace First Aid Kits	8-17
Wound Care Module	11
Wound Closures	19
Wound Dressing	20
Wound Wipes	25
Zinc	44
Zinc Oxide Tape	22

EVERYTHING YOU NEED IS ONLINE

KIT SELECTION GUIDE

Simple First Aid Kit Selection Guide To Help you Get The Right Kit Every Time

FIRST AID TRAINING

Book Public And Private First Aid Training, Tailored To Suit Your Needs

PERSONALISED SERVICE

Contact Your Local Representative To Find Out How We Can Help You



ONSITE REPLENISHMENT

Book Onsite Replenishment, With Monthly, Quarterly Or Half Yearly Visits Available

COMPLIANCE EXPERTISE

Ask Our Team About Your Local Compliance And Workplace Safety Requirements Today

Accidental

Health & Safety®



YOUR LOCAL ACCIDENTAL DISTRIBUTOR:

CALL: 1300 362 327

FAX: 1300 882 122

www.accidental.com.au



ISO 9001
Lic. No. 309